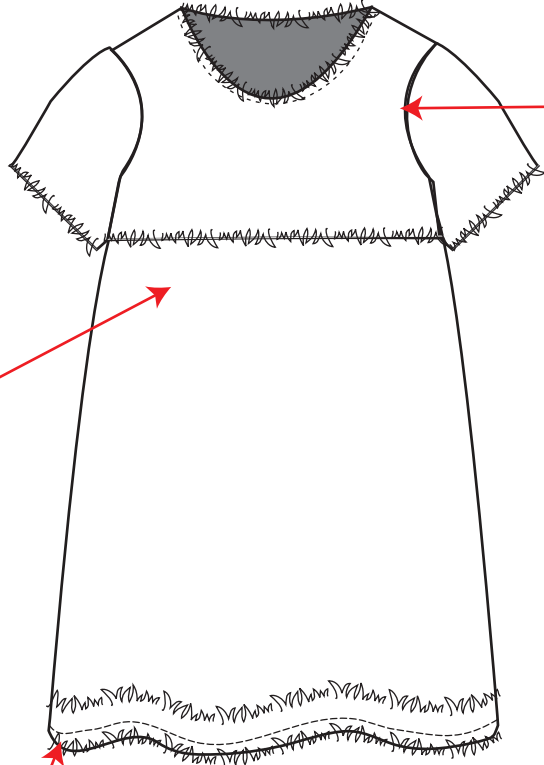


FULLY LINED



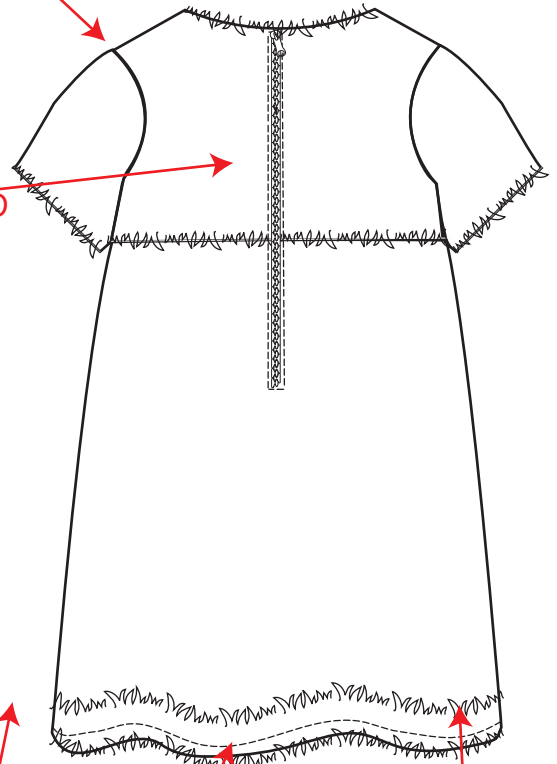
CHANNEL FABRIC ON FRONT AND BACK (CLEAN FINISHED) - NECKLINE AND ARM HOLE

FRINGE ON WAIST BAND END OF SLEEVE EDGE NECK LINE AND ON THE BOTTOM

GFW-1-SH

LINING IS 1 1/2" SHORTER THAN OUTER LAYER

#5" EXPOZED ZIPPER



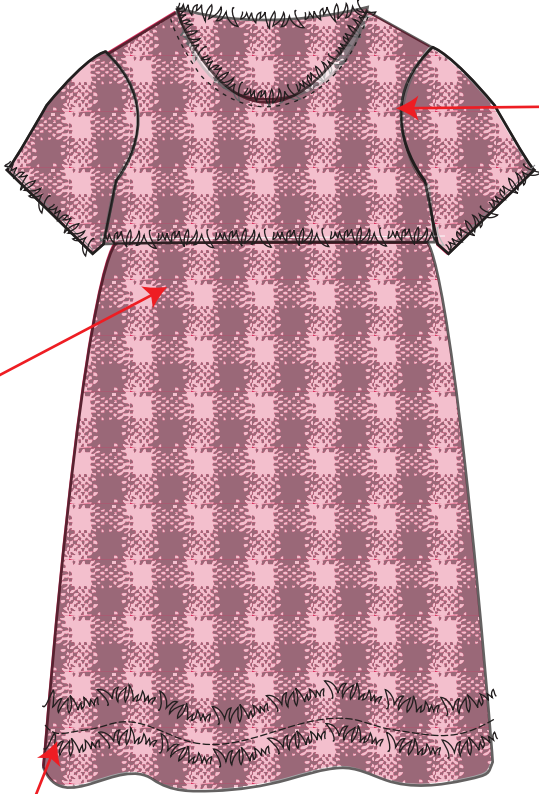
1" TURN BACK W/ SNTS

CB SEAM

LINING IS SEPARATE FROM THE BODY AND IN TACKED TOGETHER W/ A THREAD LOOP AT BOTTOM HEM



FULLY LINED

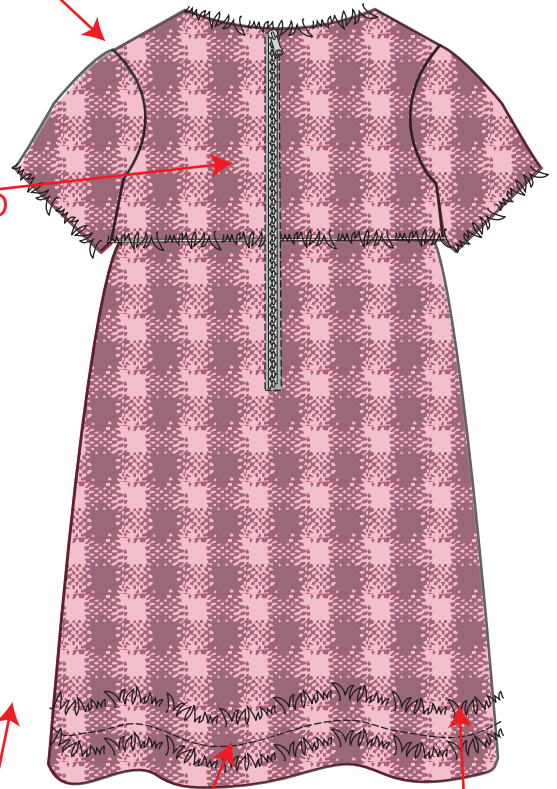


FRINGE ON  
WAIST BAND  
END OF  
SLEEVE EDGE  
NECK LINE  
AND ON THE  
BOTTOM

CHANNEL FABRIC  
ON FRONT  
AND  
BACK  
(CLEAN FINISHED) - NECKLINE  
AND ARM HOLE

GFW-1-SH  
LINING IS 1 1/2" SHORTER  
THAN OUTER LAYER

#5"  
EXPOZED  
ZIPPER

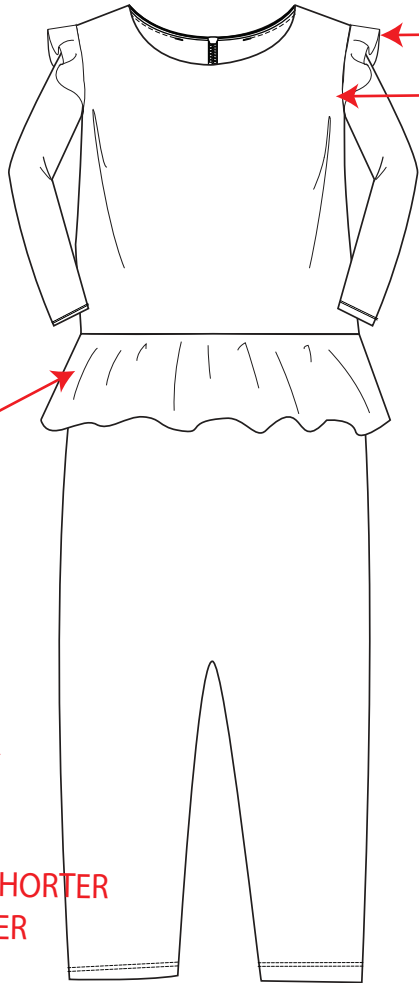


1" TURN BACK  
W/ SNTS

CB SEAM

LINING IS  
SEPARATE  
FROM THE  
BODY  
AND IN  
TACKED  
TOGETHER W/ A  
THREAD LOOP AT  
BOTTOM HEM

FULLY LINED



RUFFLE on the Sleeve arm hole

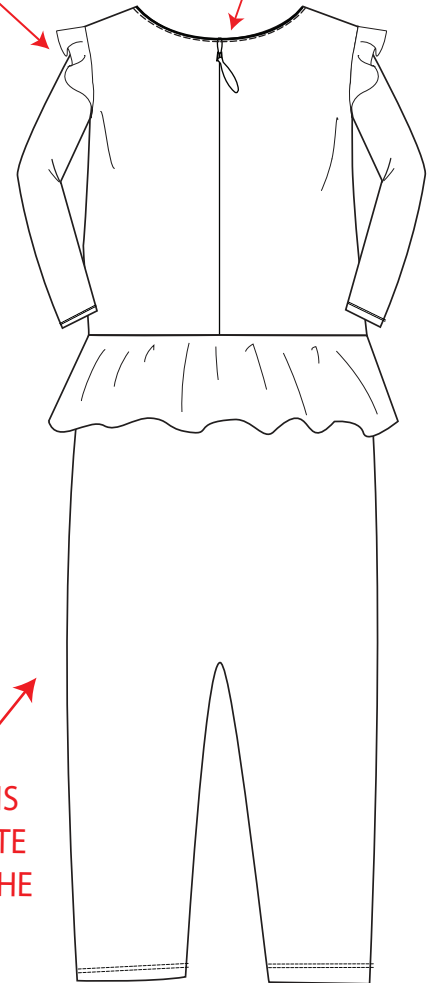
VELOUR FABRIC ON FRONT AND BACK (CLEAN FINISHED) - NECKLINE AND ARM HOLE

PEPLUM on the WAIST

LINING IS 1 1/2" SHORTER THAN OUTER LAYER

GFW-1-SH

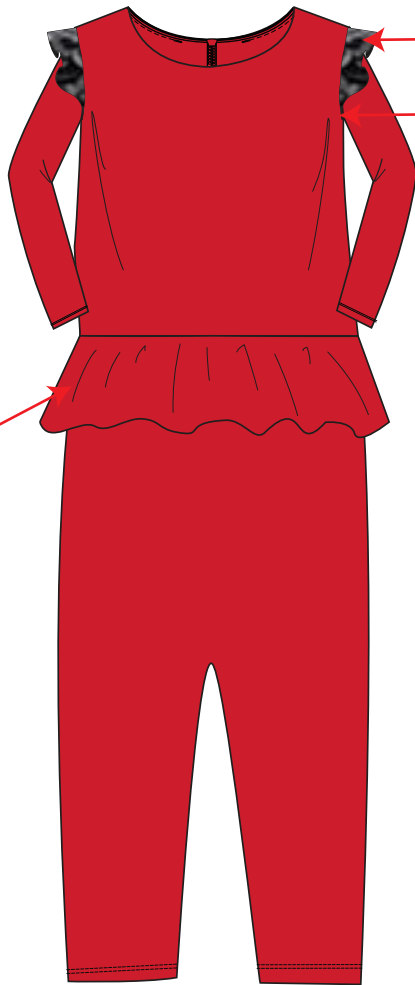
#3 NYLON COIL HIDDEN ZIPPER DTM @ CB



LINING IS SEPARATE FROM THE BODY AND IN TACKED TOGETHER W/ A THREAD LOOP AT BOTTOM HEM



FULLY LINED



RUFFLE on the Sleeve arm hole

VELOUR FABRIC  
ON FRONT  
AND  
BACK  
(CLEAN FINISHED) - NECKLINE  
AND ARM HOLE

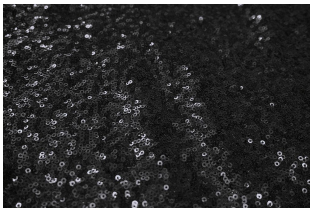
PEPLUM  
on the WAIST

GFW-1-SH  
LINING IS 1 1/2" SHORTER  
THAN OUTER LAYER

#3 NYLON COIL HIDDEN ZIPPER DTM @ CB

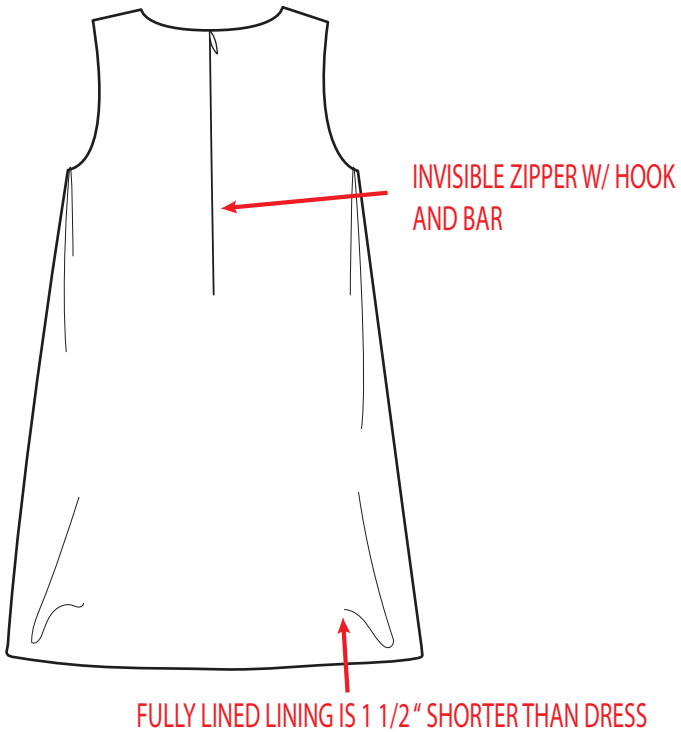
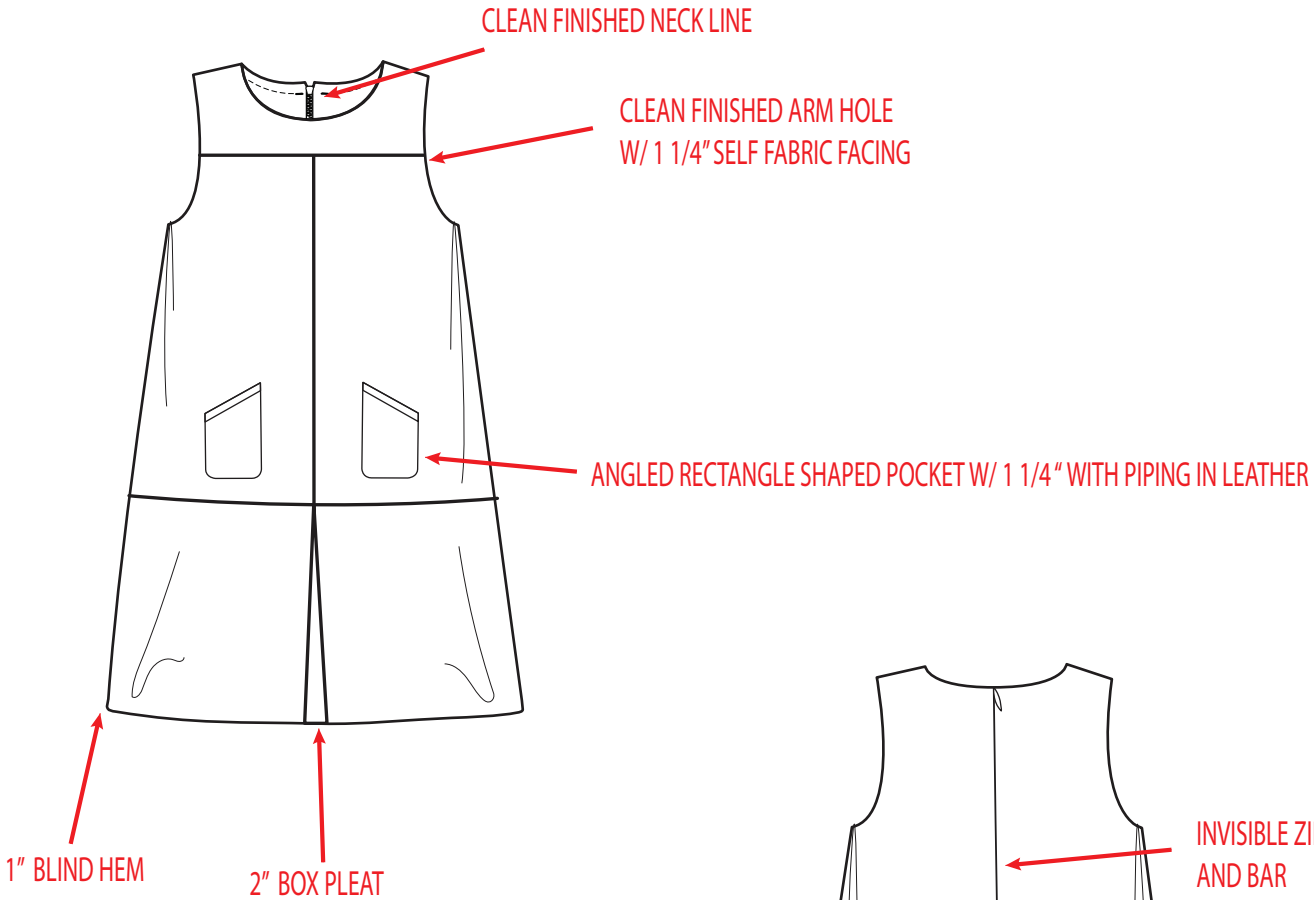


Black sequence in the ruffle over the arm hole



# FULLY LINED

GFW17-10003-KK



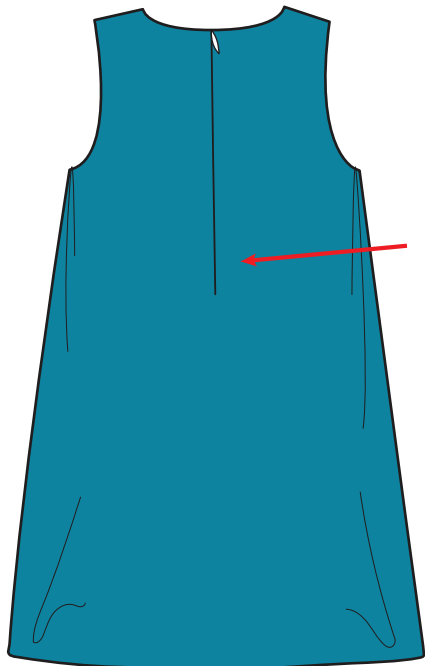
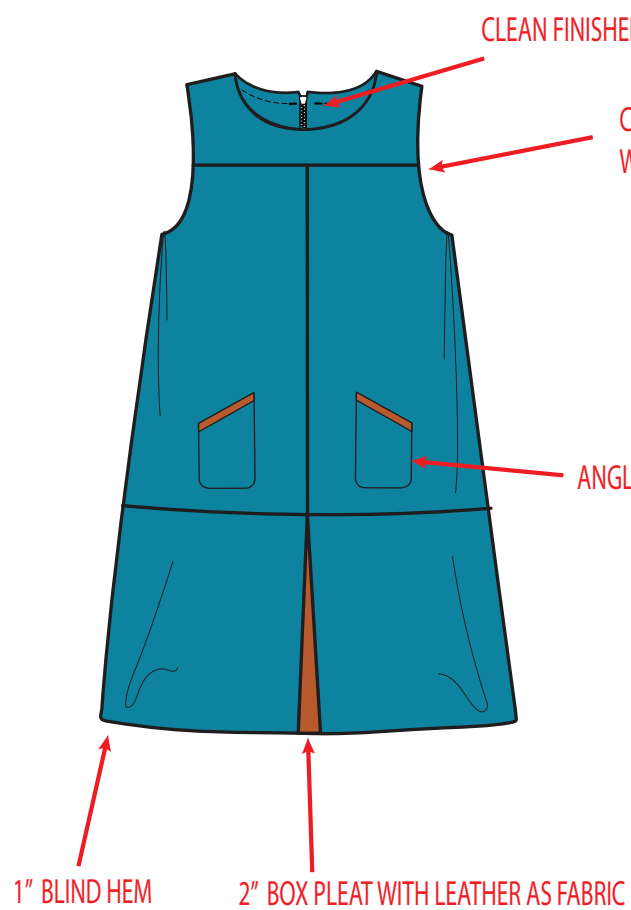
# FULLY LINED



RUST  
18-1248 TCX



NEBULAS BLUE  
18-4048 TCX



FULLY LINED LINING IS 1 1/2" SHORTER THAN DRESS

FULLY LINED

GFW17-10003-KK

CLEAN FINISHED NECK LINE

SELF FABRIC GATHERED PLEATS

FABRIC COLOR DYED LACE TO MATCH GROUND

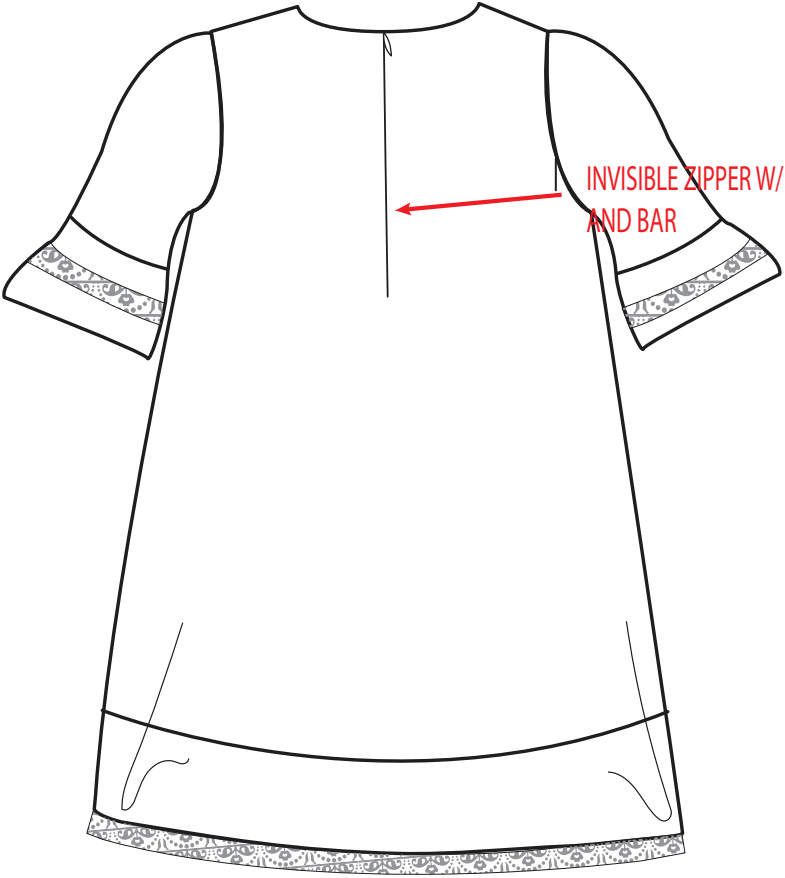
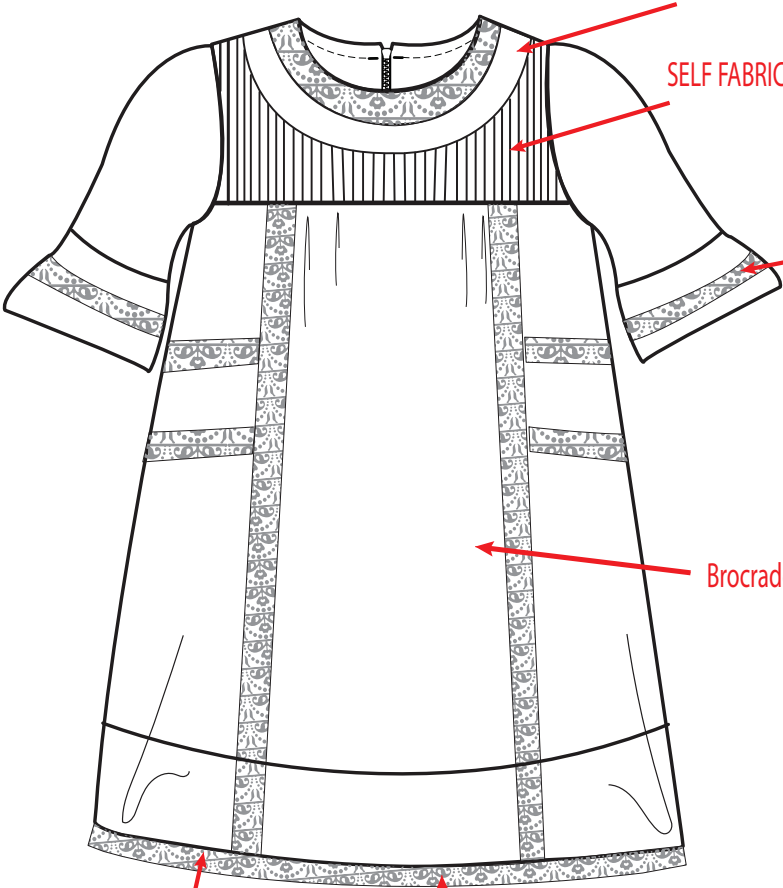
Brocade Embroidery on central Panel

1" BLIND HEM

Lace 1" below the Hem


INVISIBLE ZIPPER W/ HOOK AND BAR

FULLY LINED LINING IS 1 1/2" SHORTER THAN DRESS



FULLY LINED



  
GOLDEN GLOW  
15-1050 TCX



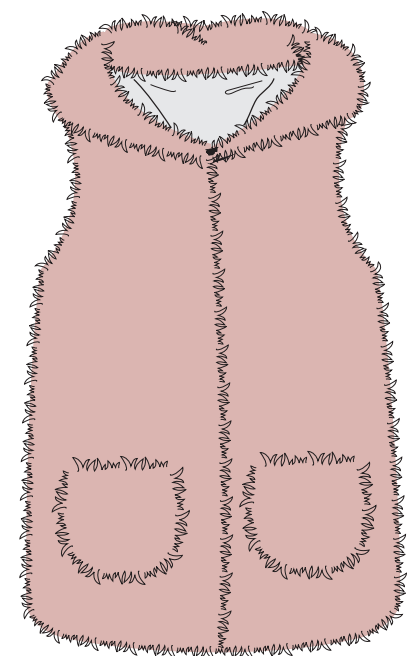
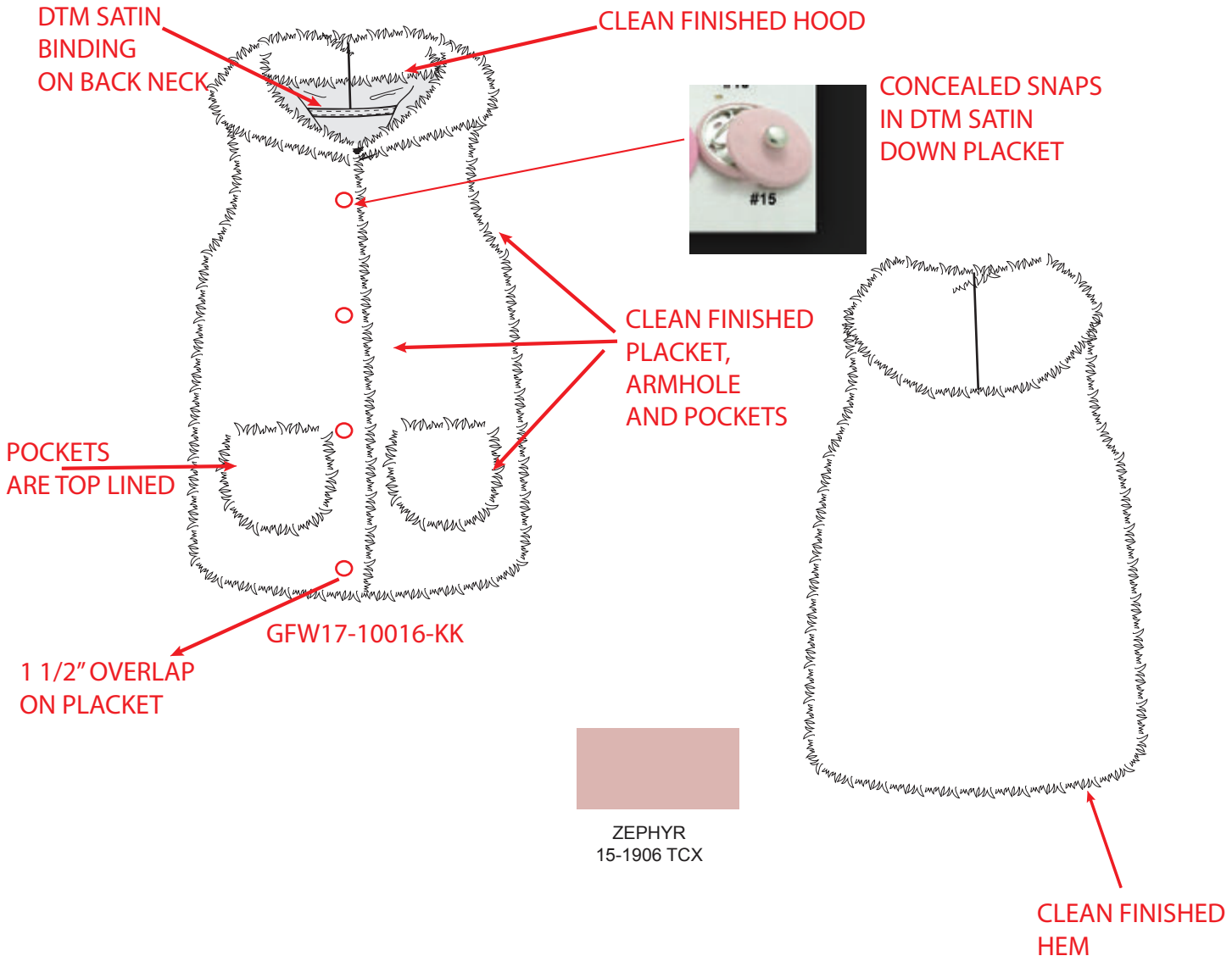
FABRIC COLOR DYED LACE TO MATCH GROUND



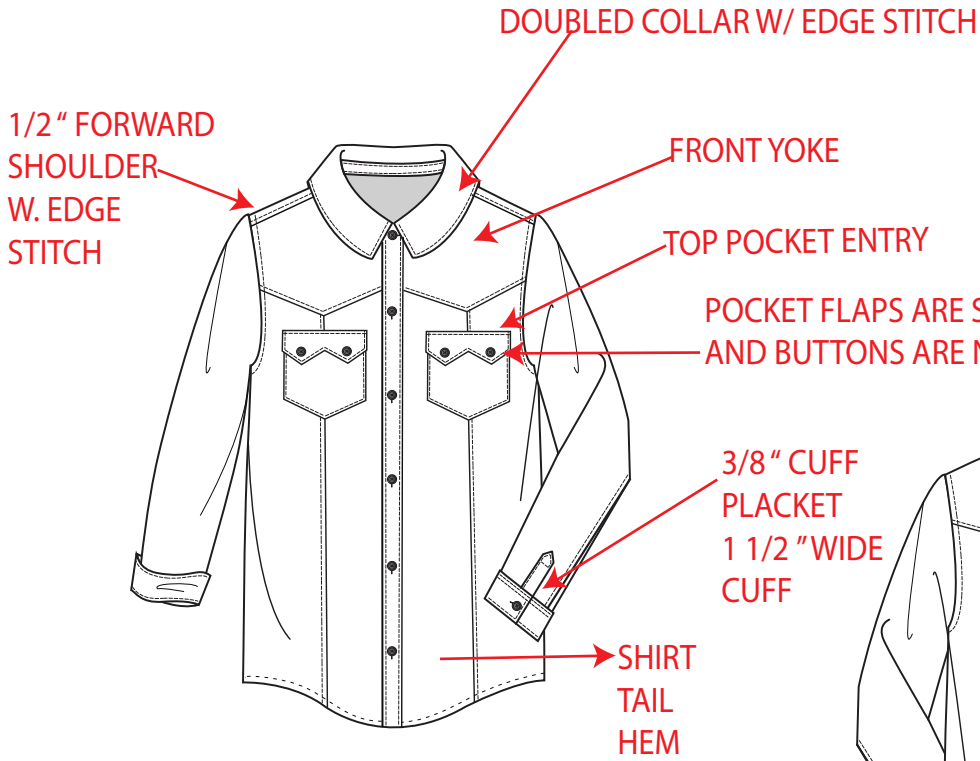


\* THIS STYLE HAS FUR VEST

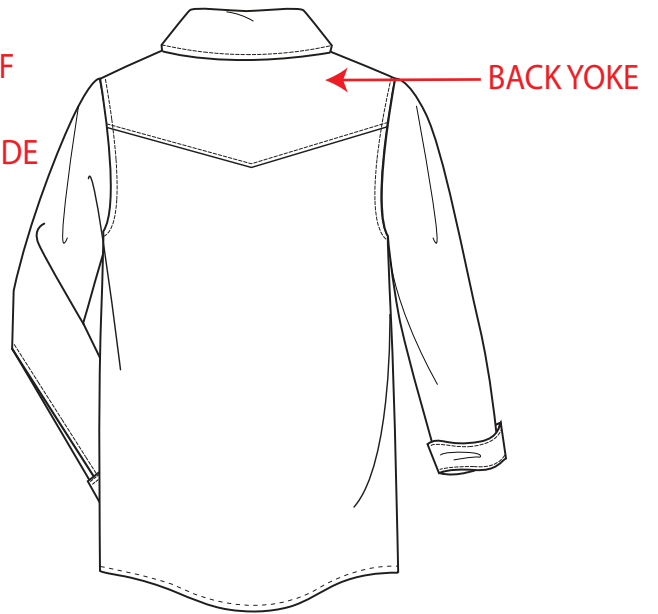
FULLY LINED



1/4" SNTS ON ALL SEAMS



GFW17-10017-KK



HEATHER  
14-4110 TCX

**UNLINED**

ALL HEAVY TOP STITCHING WILL BE A CONTRASTING COLOR

COIN POCKET  
NON FUNCTIONAL

POCKET  
ENTRY

FUNCTIONAL SNAP

PARTIAL FLY

DNTS

SELF FABRIC  
FABRIC LOOPS

1" COVERED  
ELASTIC AT  
WAIST

1/2" TURN  
OVER POCKET  
HEM

POCKET ENTRY

EMBROIDERY ON FRONT  
PANEL ON WEARERS  
RIGHT SIDE

1/4"  
DNTS

FRAYED HEM W/  
EDGE  
STITCH

GFW17-10018-KK

STRAIGHT  
LEG OPENING

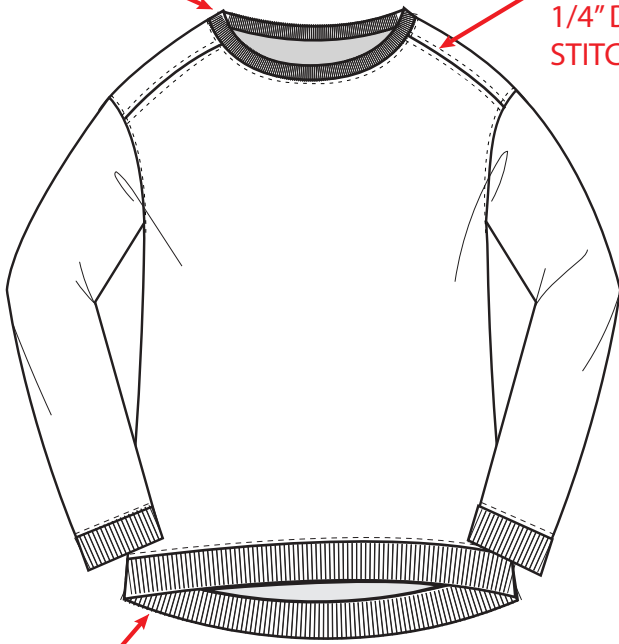


Add Embroidery patch work for front and back of jeans

GIRLS PLEATHER SECTIONED LEGGINGS

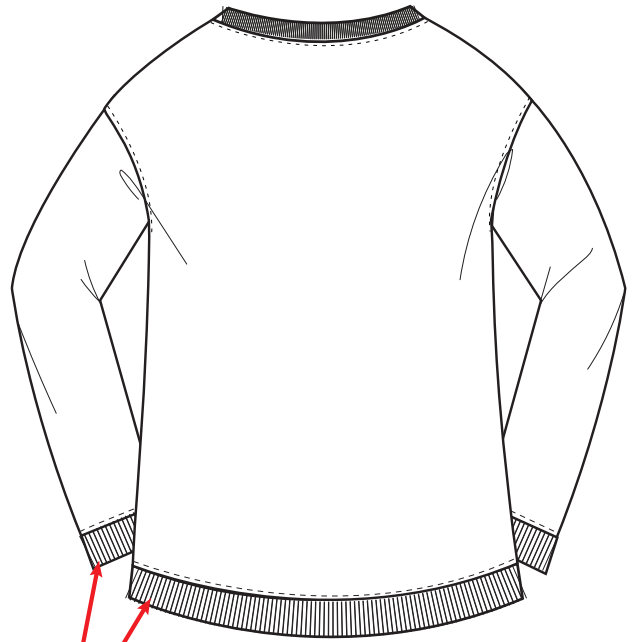
1/2" 2X12 RIB BINDING  
W/ EDGE STITCH

3/4" FORWARD  
SHOULDER W/  
1/4" DNTS SPLIT  
STITCH



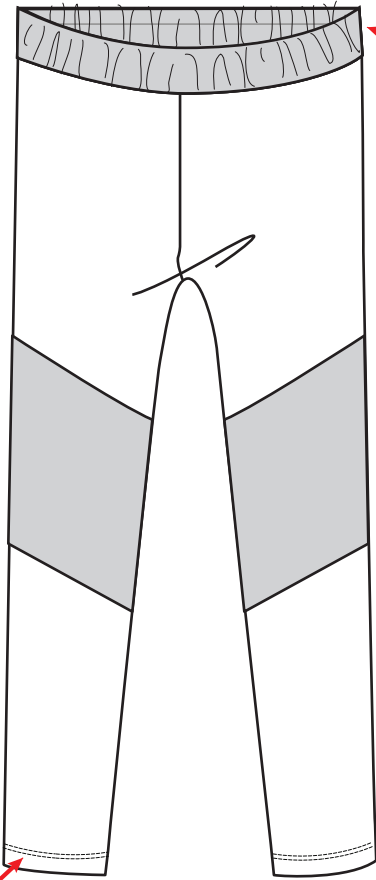
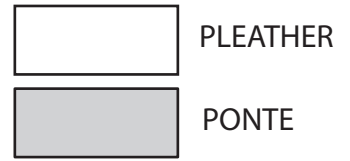
HI-LO  
HEM

GFW17-10011-KK



1 1/2" RIB 2X2  
HEM W/  
EDGE STITCH

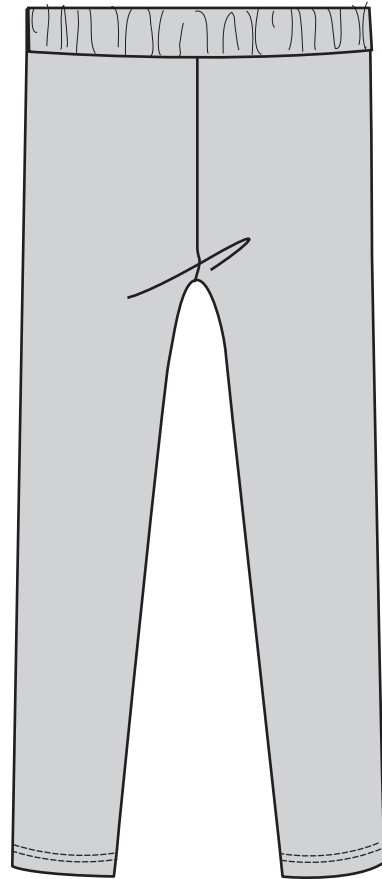
\* THIS STYLE HAS PLEATHER



3/4" W.B.  
IN PONTE  
W/ TUNNEL ELASTIC

5/8" TURNBACK  
W/ 1/8" DNTS

GFW17-10012-KK



1/2" 2X12 RIB BINDING  
W/ EDGE STITCH

3/4" FORWARD  
SHOULDER W/  
1/4" DNTS SPLIT  
STITCH



HI-LO  
HEM

GFW17-10011-KK



1 1/2" RIB 2X2  
HEM W/  
EDGE STITCH



METEORITE  
19-4008 TCX



MIRAGE GRAY  
15-4703 TCX

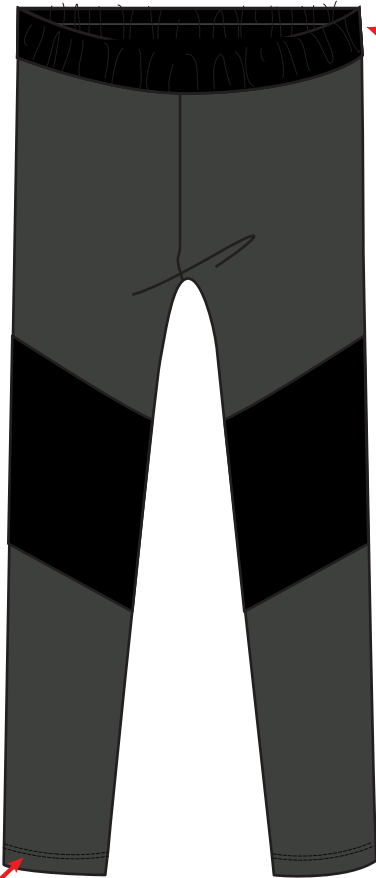


ROSE OF SHARON  
17-1635 TCX

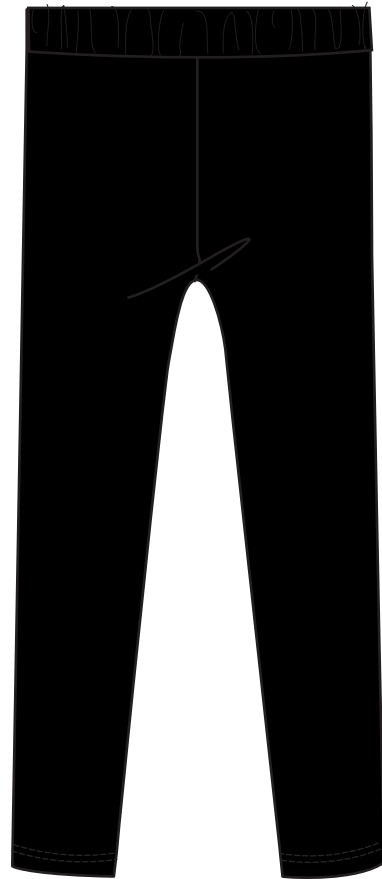


SILVER  
14-5002 TCX

\* THIS STYLE HAS PLEATHER



3/4" W.B.  
IN PONTE  
W/ TUNNEL ELASTIC



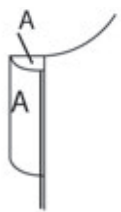
5/8" TURNBACK  
W/ 1/8" DNTS

GFW17-10012-KK





Chin Guard

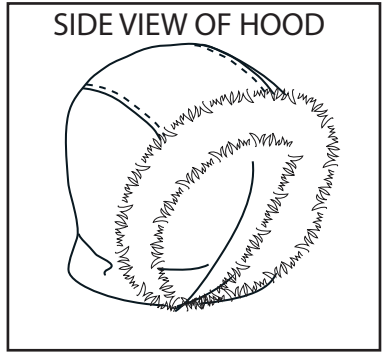
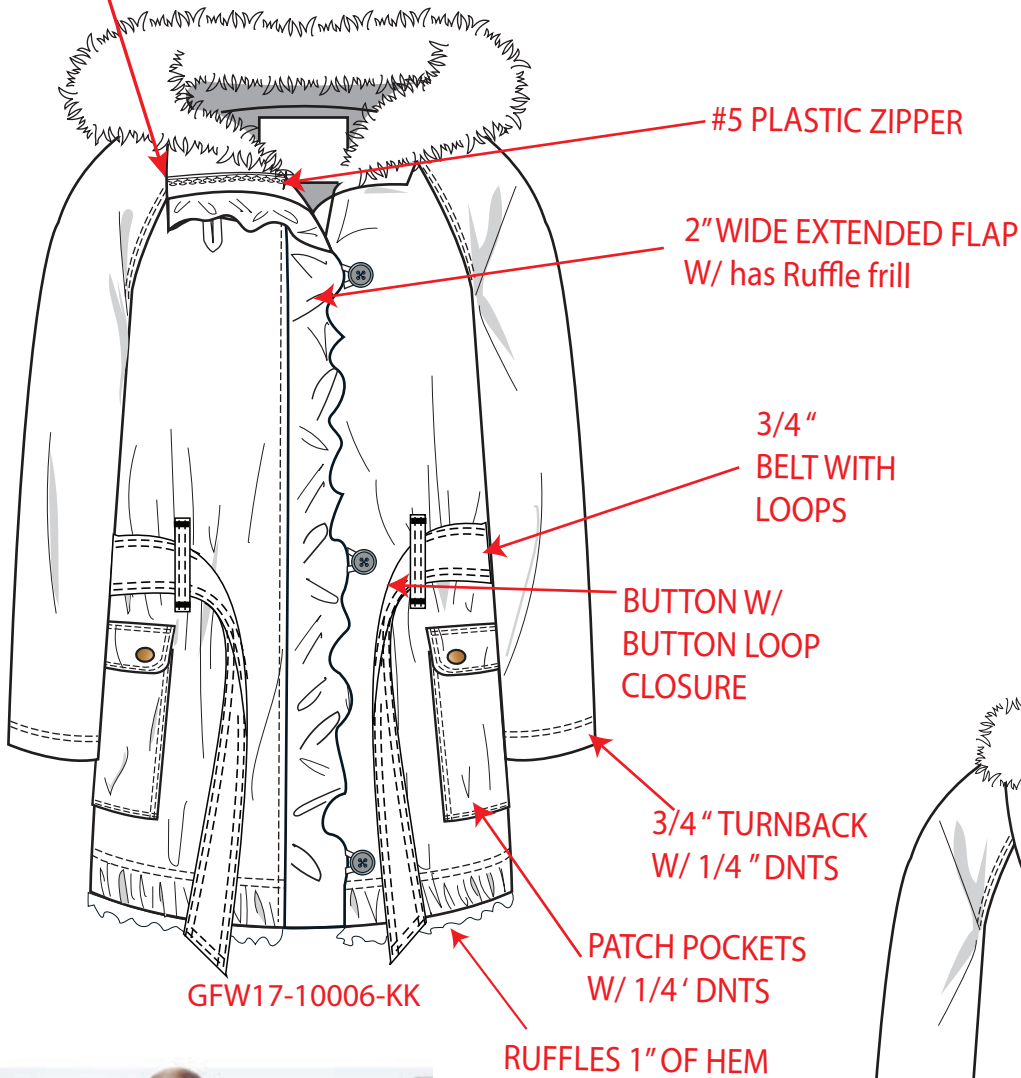


Left Side

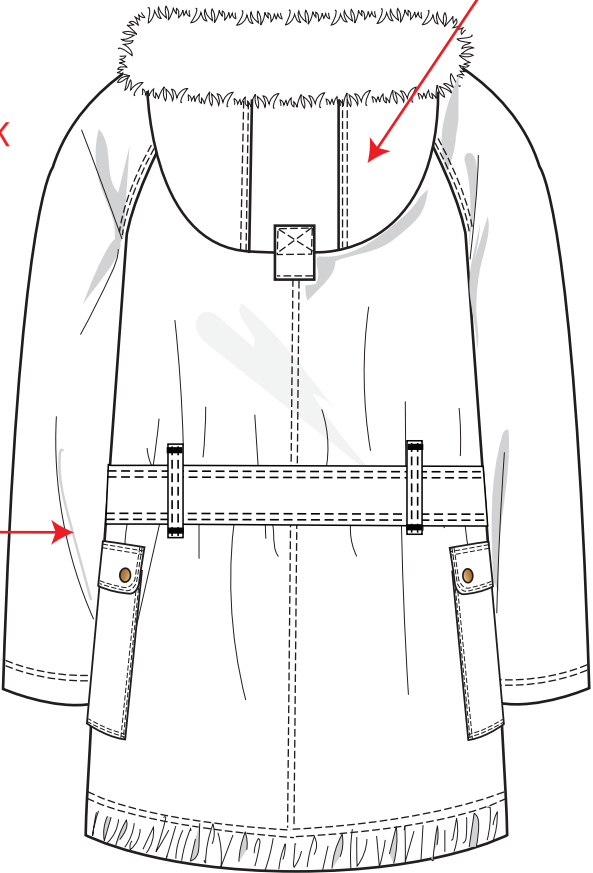
# GIRLS UTILITY JACKET

**\* THIS JACKET HAS A FUR BOA**

**ALL SEAMS ARE IN CONTRAST HEAVY STITCHING**

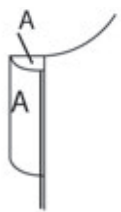


3 PC HOOD W 1/4" DNTS





Chin Guard

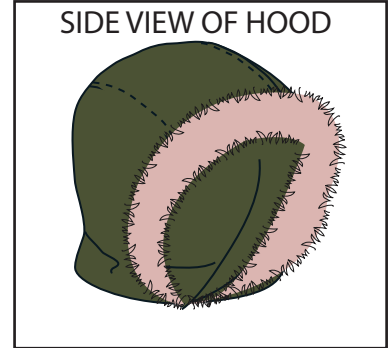


Left Side

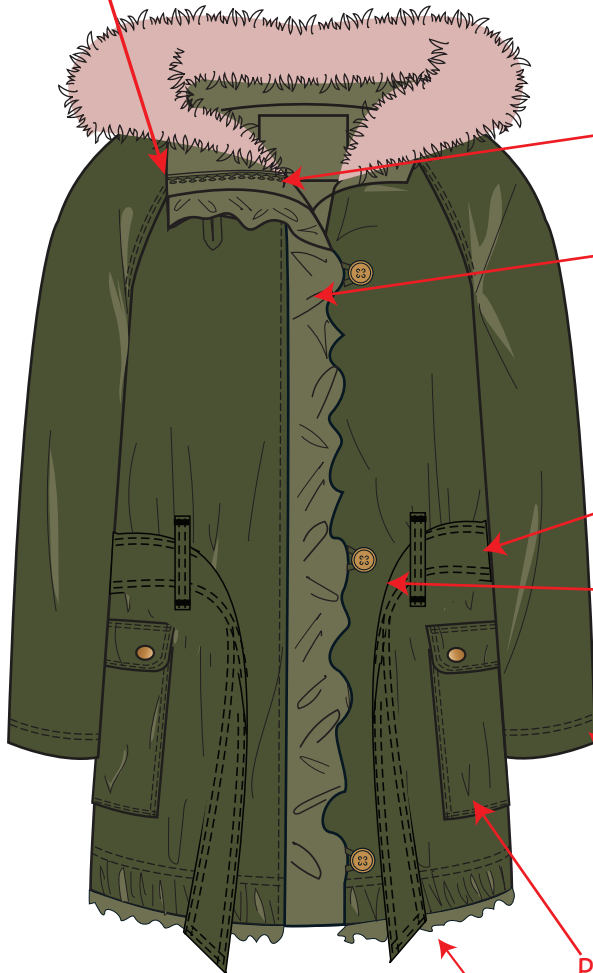
# GIRLS UTILITY JACKET

**\* THIS JACKET HAS A FUR BOA**

**ALL SEAMS ARE IN CONTRAST HEAVY STITCHING**



SIDE VIEW OF HOOD



#5 PLASTIC ZIPPER

2" WIDE EXTENDED FLAP  
W/ has Ruffle frill

3/4" BELT WITH  
LOOPS

BUTTON W/  
BUTTON LOOP  
CLOSURE

3/4" TURNBACK  
W/ 1/4" DNTS

PATCH POCKETS  
W/ 1/4' DNTS

RUFFLES 1" OF HEM

3/4" FLAT ELASTIC  
AT BOTTOM HEM

GFW17-10006-KK

3 PC HOOD  
W 1/4" DNTS



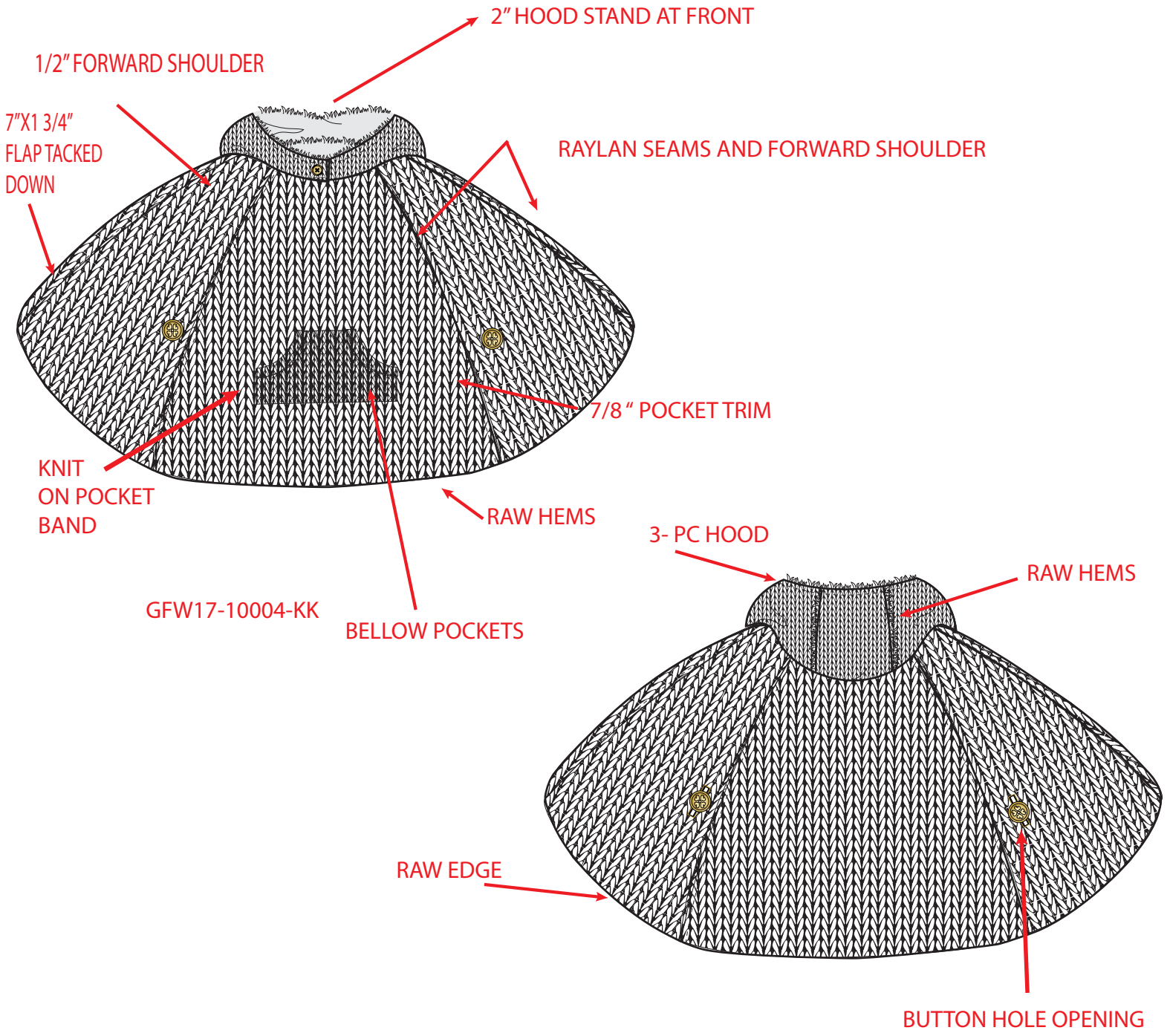
ZEPHYR  
15-1906 TCX



LODEN GREEN  
18-0422 TCX

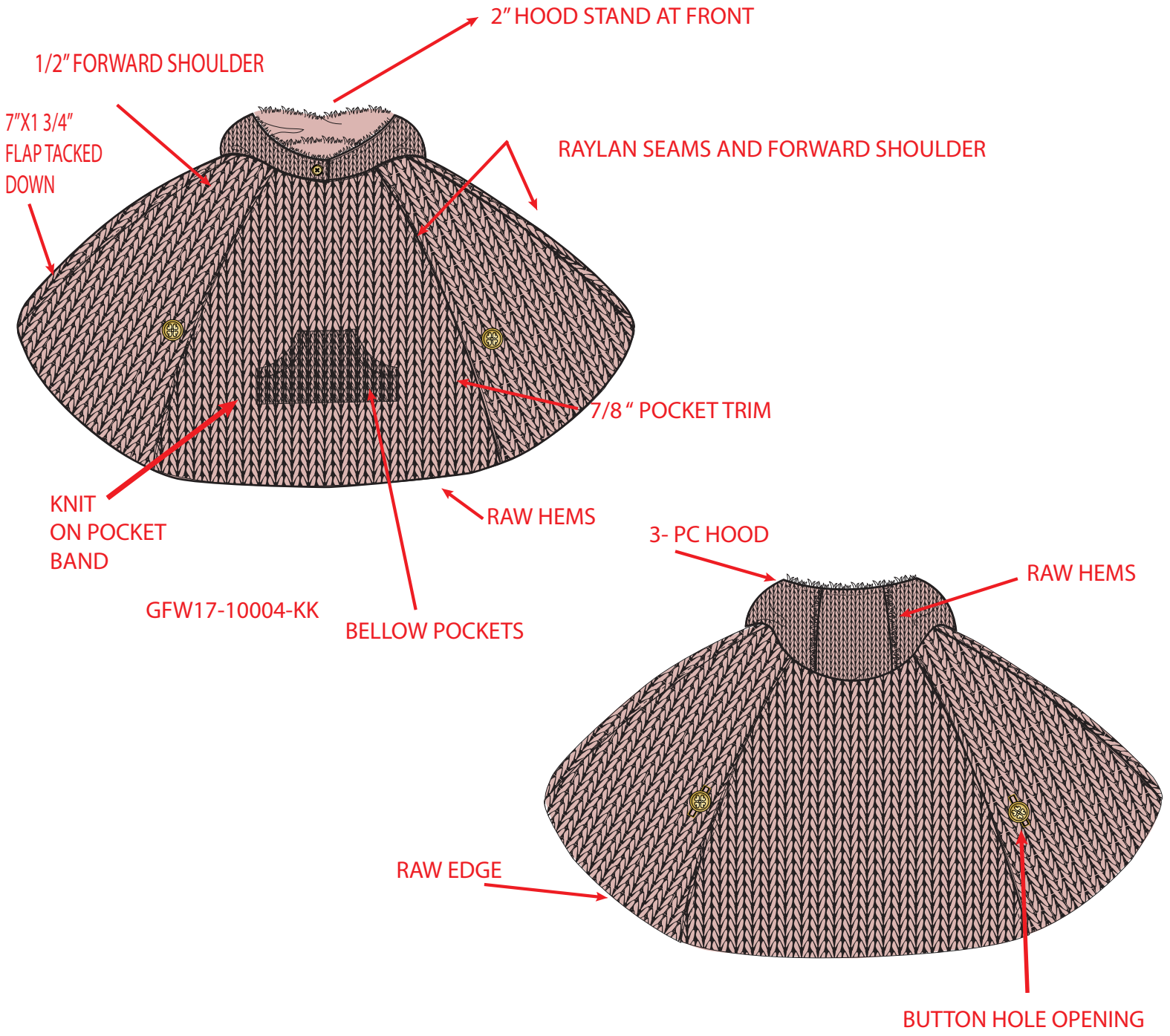


CHIVE  
19-0323 TCX



REFERENCE PICTURE





REFERENCE PICTURE



GOLD BUTTONS



ZEPHYR  
15-1906 TCX

THICK CABLE KNIT



# UNLINED

\* THIS STYLE HAS A SHERPA COLLAR

3/8" TWILL TAPE ON BACK NECK

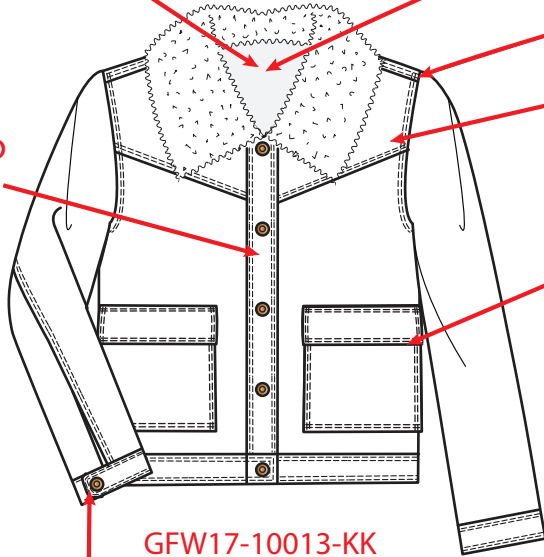
SHERPA COLLAR W/POLY LINING ON INSIDE

FORWARD SHOULDER SEAM

FRONT YOKE

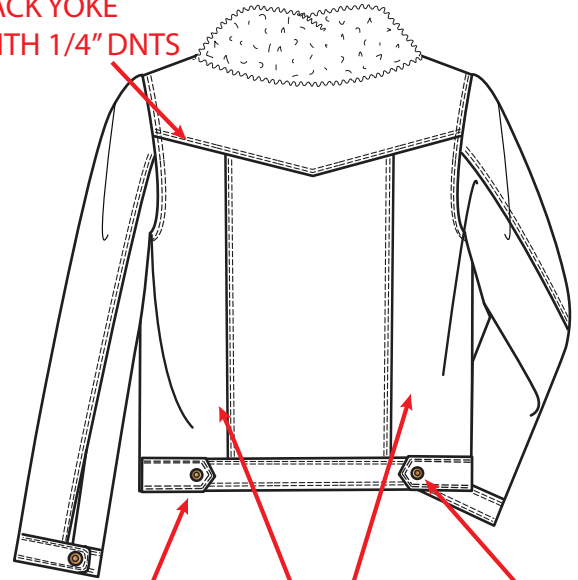
1" PIECED  
PLACKET  
W/EDGE  
STITCH

POCKET ENTRY/ POCKET FLAP W/EDGE STITCH



FUNCTIONAL  
WRIST TAB W/ SNAP  
AND SLIT

SINGLE PLY  
BACK YOKE  
WITH 1/4" DNTS



NON FUNCTIONAL  
TABS W/ SNAP

1" WAIST BAND WITH  
1/4" EDGE STITCHING

1/4" HEAVY DTM  
STITCHING ON ALL SEAMS



CLICK ON THE PHOTO TO ZOOM IN



CLICK ON THE PHOTO TO ZOOM IN

# UNLINED

\* THIS STYLE HAS A SHERPA COLLAR

3/8" TWILL TAPE ON BACK NECK

SHERPA COLLAR W/POLY LINING ON INSIDE

FORWARD SHOULDER SEAM

FRONT YOKE

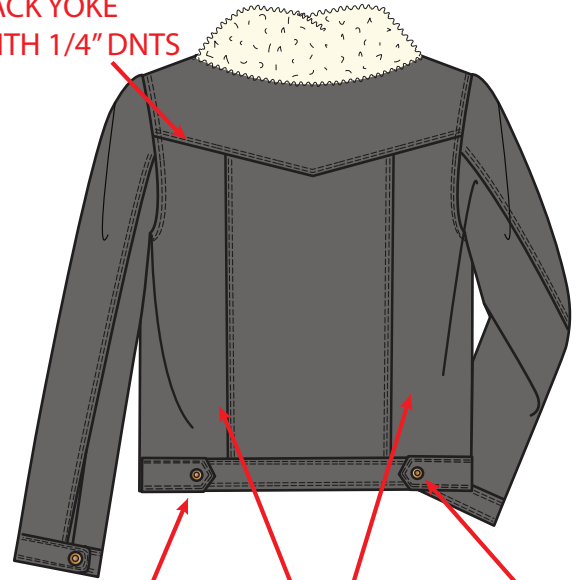
1" PIECED  
PLACKET  
W/EDGE  
STITCH

POCKET ENTRY/ POCKET FLAP W/EDGE STITCH



FUNCTIONAL  
WRIST TAB W/ SNAP  
AND SLIT

SINGLE PLY  
BACK YOKE  
WITH 1/4" DNTS



1" WAIST BAND WITH  
1/4" EDGE STITCHING

SEAMS WITH  
1/4" DNTS

1/4" HEAVY DTM  
STITCHING ON ALL SEAMS



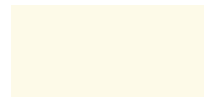
CLICK ON THE PHOTO TO ZOOM IN



CLICK ON THE PHOTO TO ZOOM IN



PEWTER  
18-5203 TCX



BRAZILIAN SAND  
13-1308 TCX



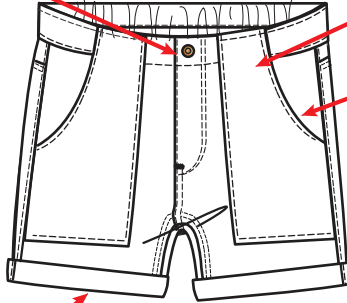
**UNLINED**

**1/4" HEAVY STICHING  
ON ALL SEAMS**

FUNCTIONAL SNAP W/ ZIPPER FLY

BELT CAN LOOP THROUGH POCKET

FUNCTIONAL PATCH POCKET



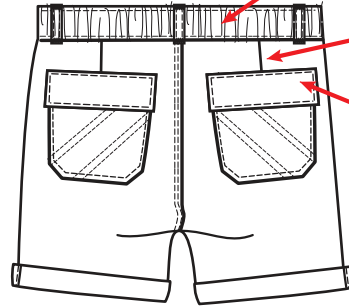
GFW17-10014-KK

1" CUFFED HEM TACKED DOWN ON SIDES

1" WAIST BAND W/ELASTIC ON BACK

DARTS

FUNCTIONAL BACK  
POCKETS W/ FLAPS



1/4" HEAVY STICHING  
ON ALL SEAMS

UNLINED

FUNCTIONAL SNAP W/ ZIPPER FLY

BELT CAN LOOP THROUGH POCKET

FUNCTIONAL PATCH POCKET

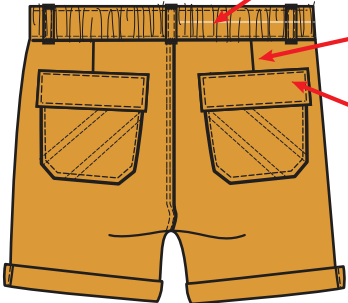
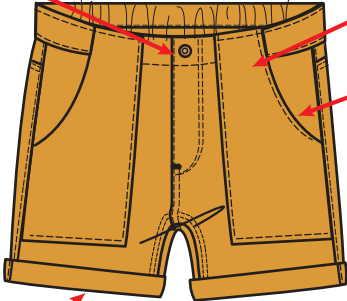
1" WAIST BAND W/ ELASTIC ON BACK

DARTS

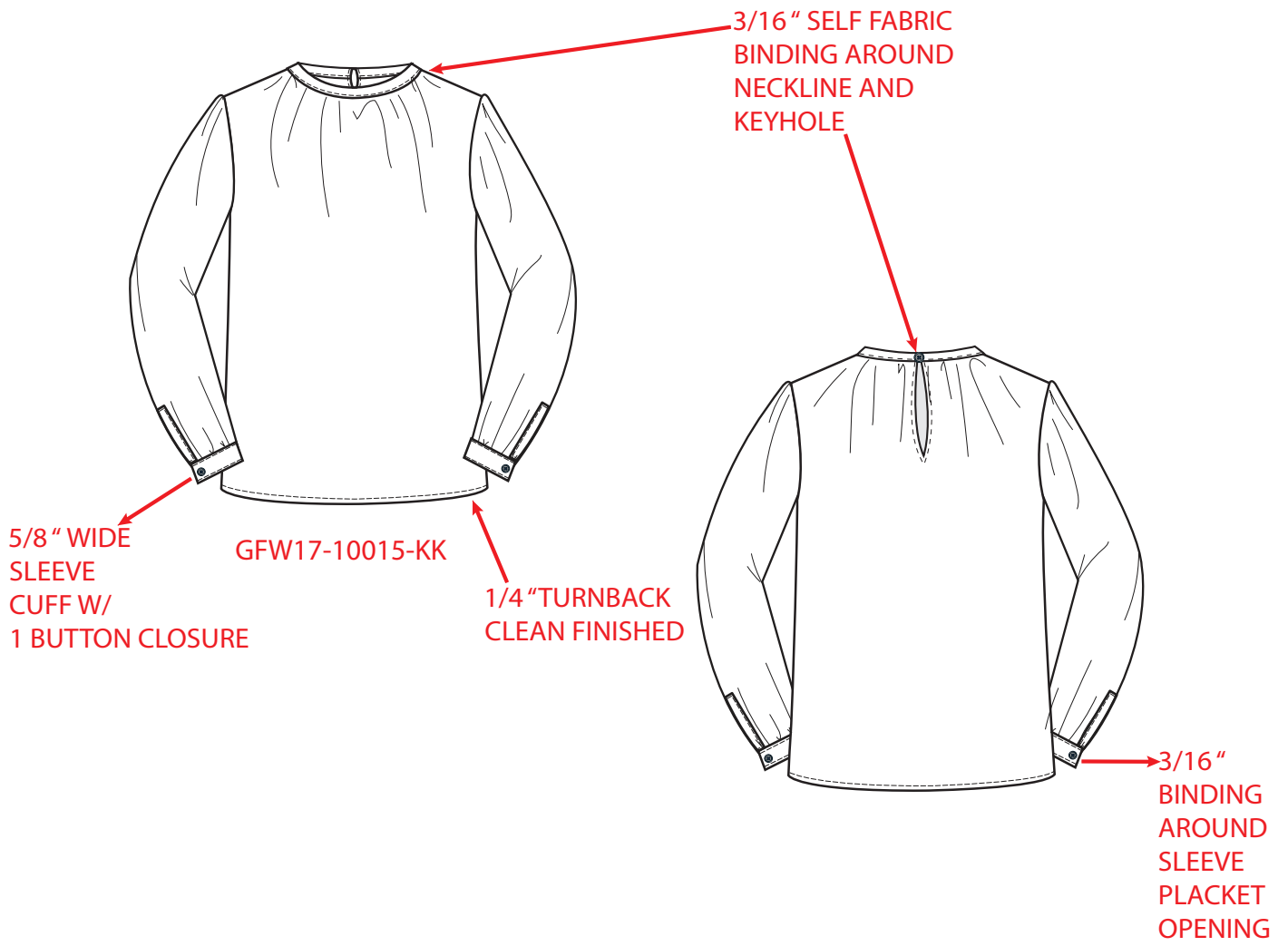
FUNCTIONAL BACK  
POCKETS W/ FLAPS

GFW17-10014-KK

1" CUFFED HEM TACKED DOWN ON SIDES

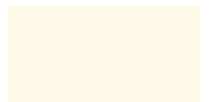
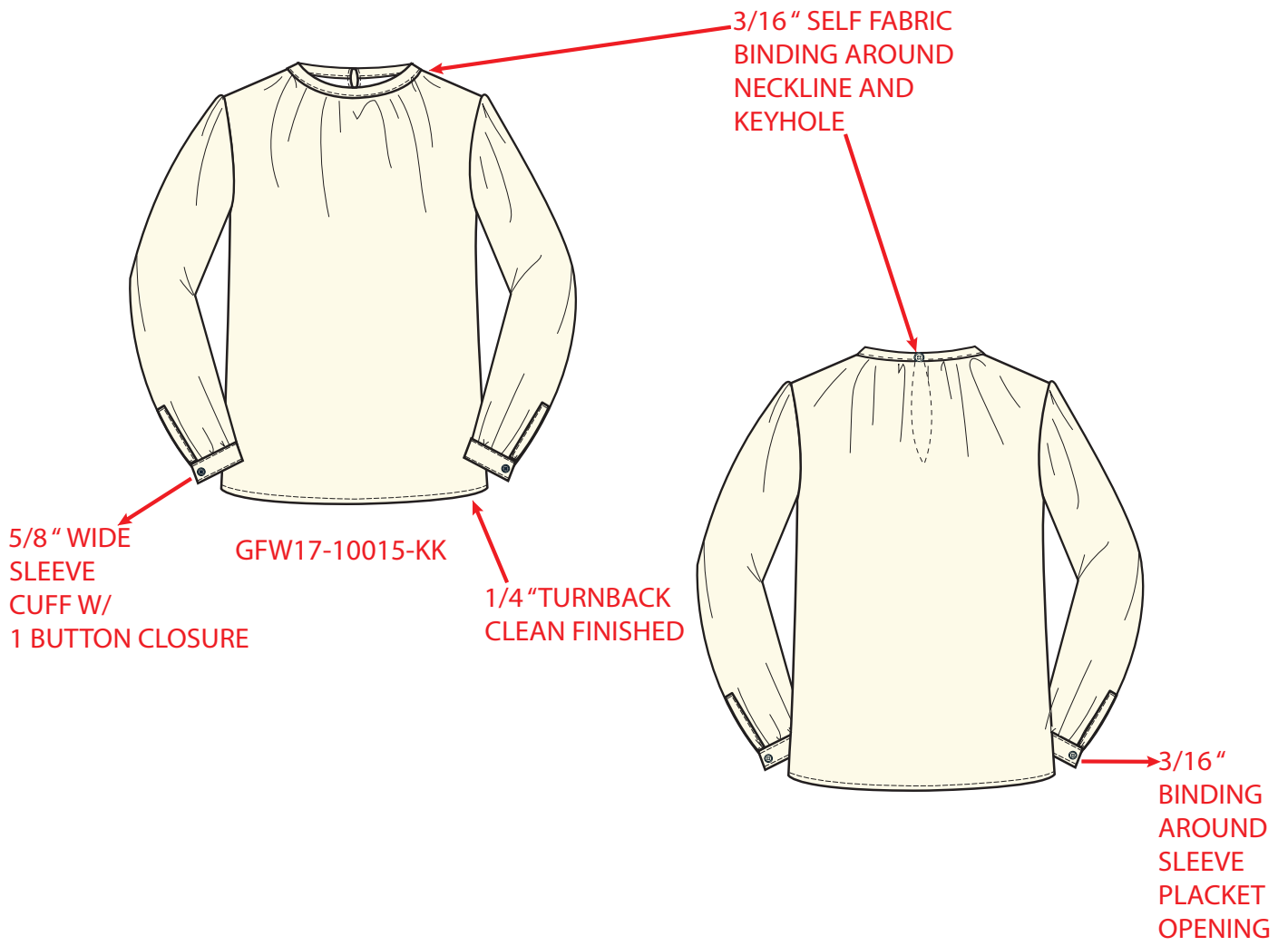


GOLDEN GLOW  
15-1050 TCX





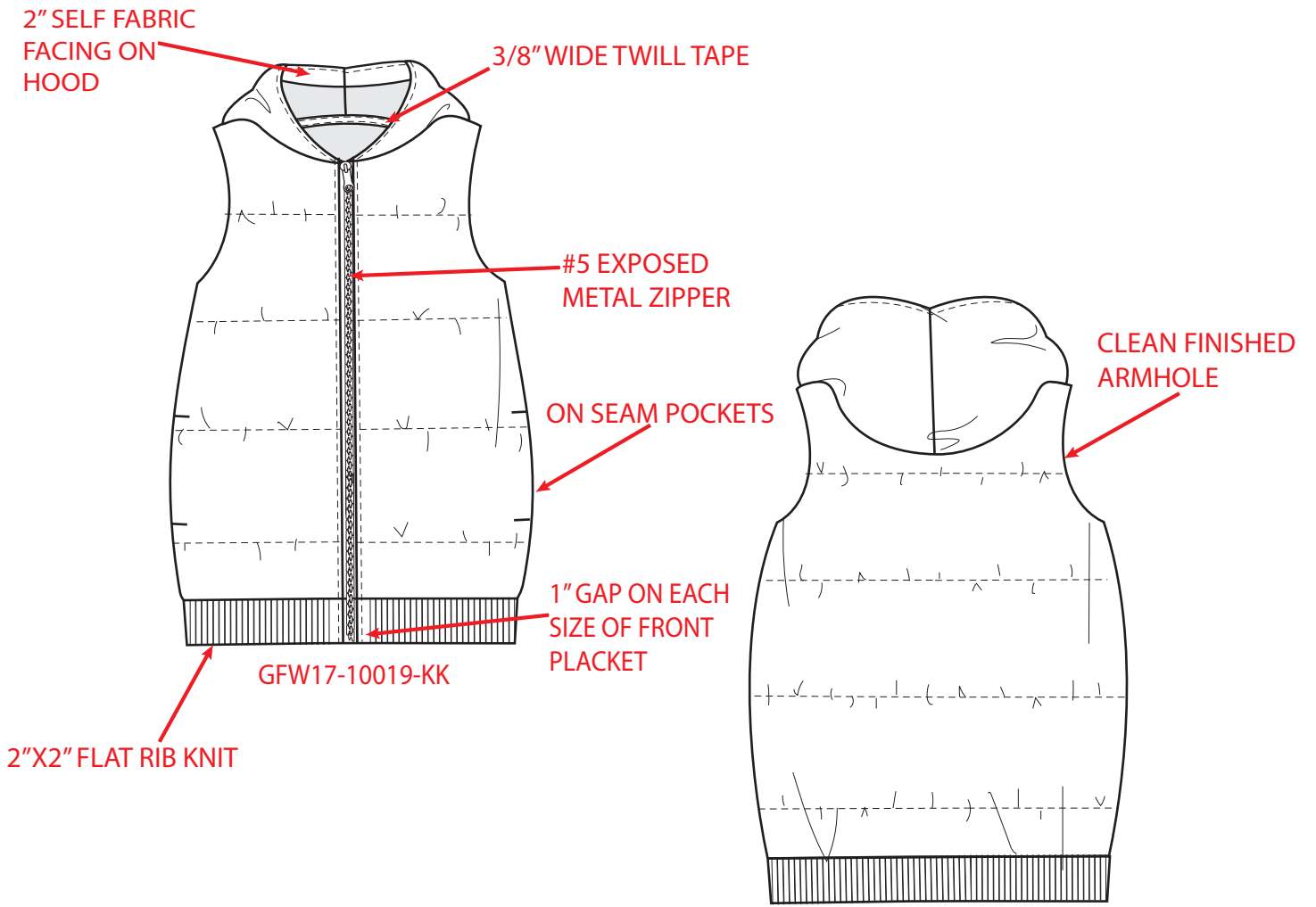
GIRLS CORD JACKET AND SHORTS



BRAZILIAN SAND  
13-1308 TCX

# FULLY LINE

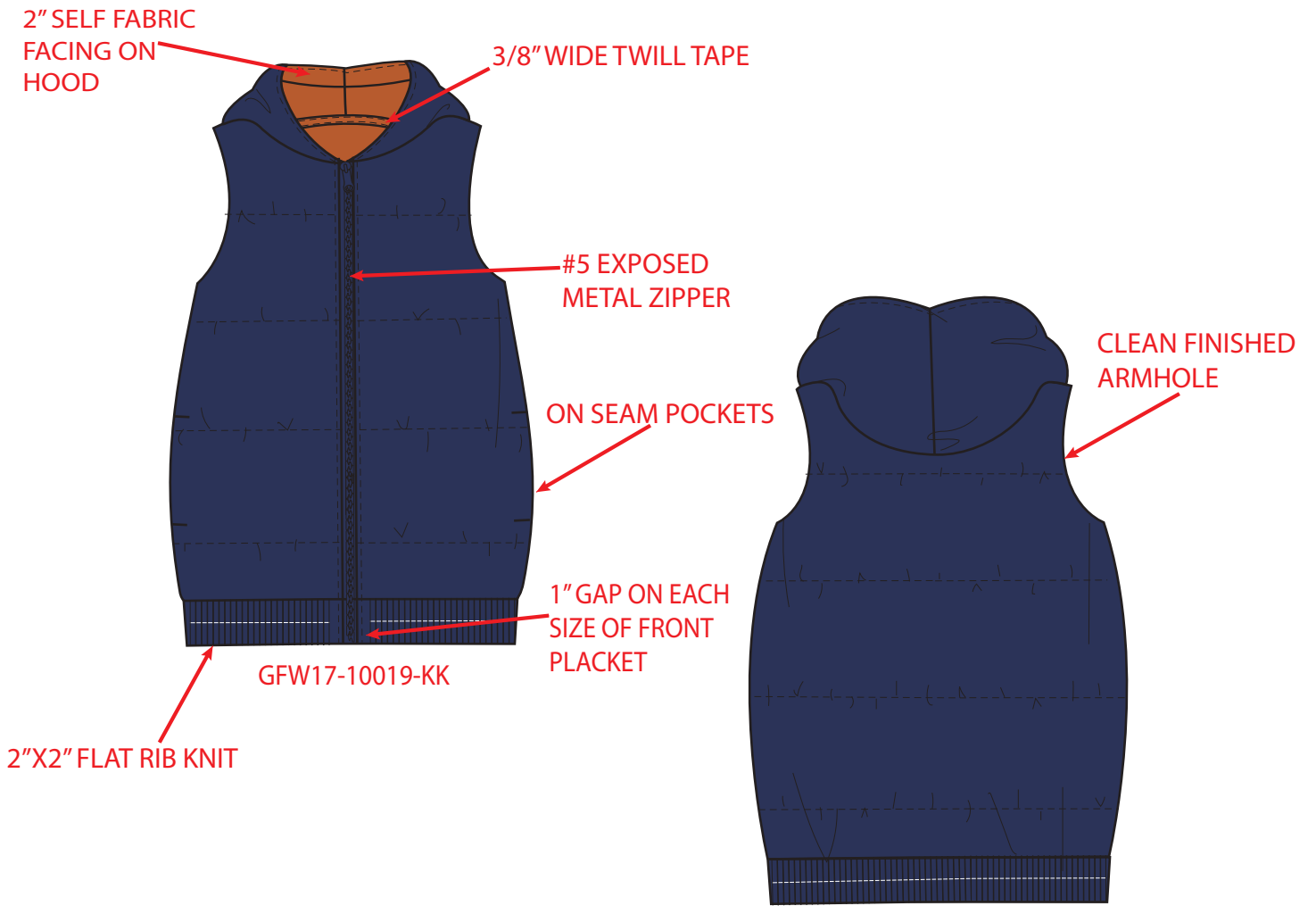
\* THIS STYLE IS A VELOUR VEST



GFW17-10020-KK

# FULLY LINE

\* THIS STYLE IS A VELOUR VEST



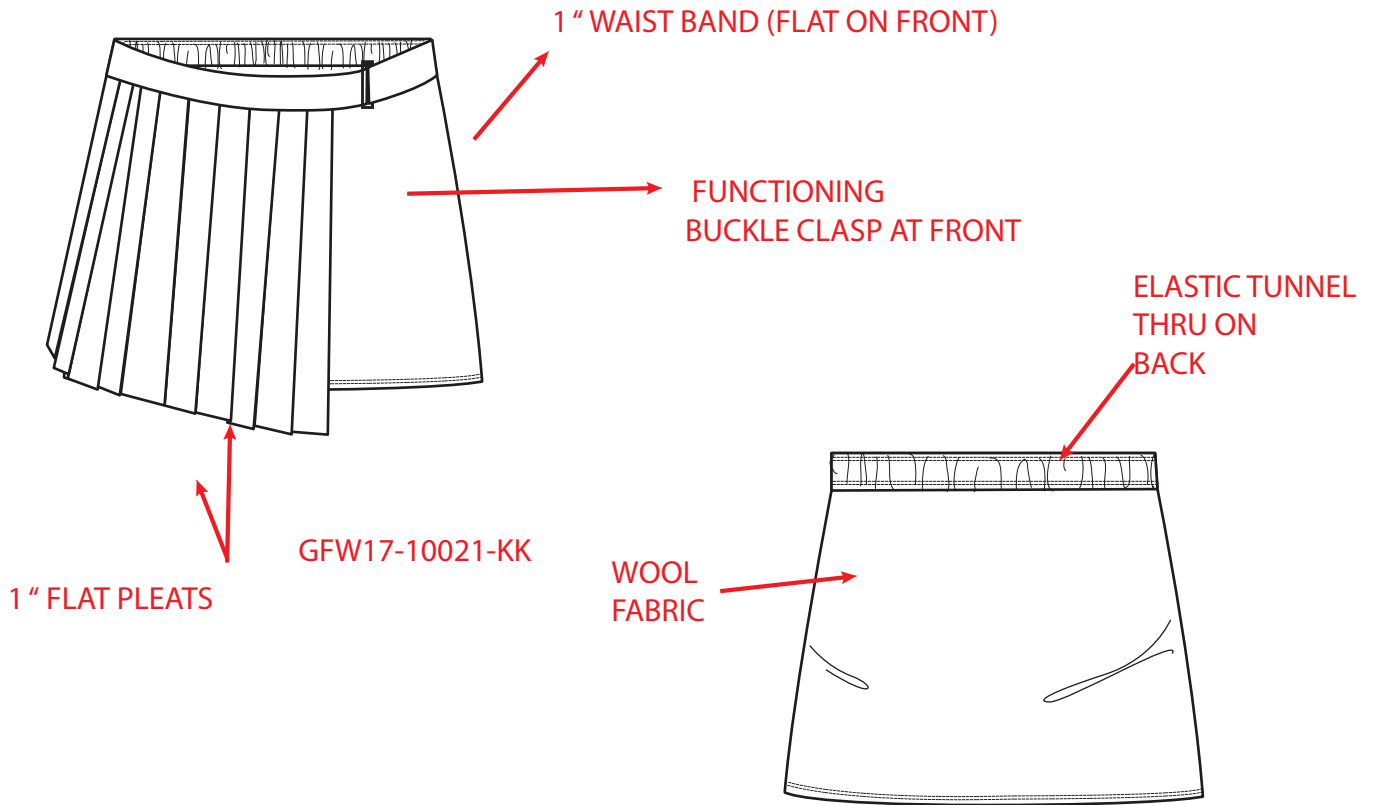
GFW17-10020-KK

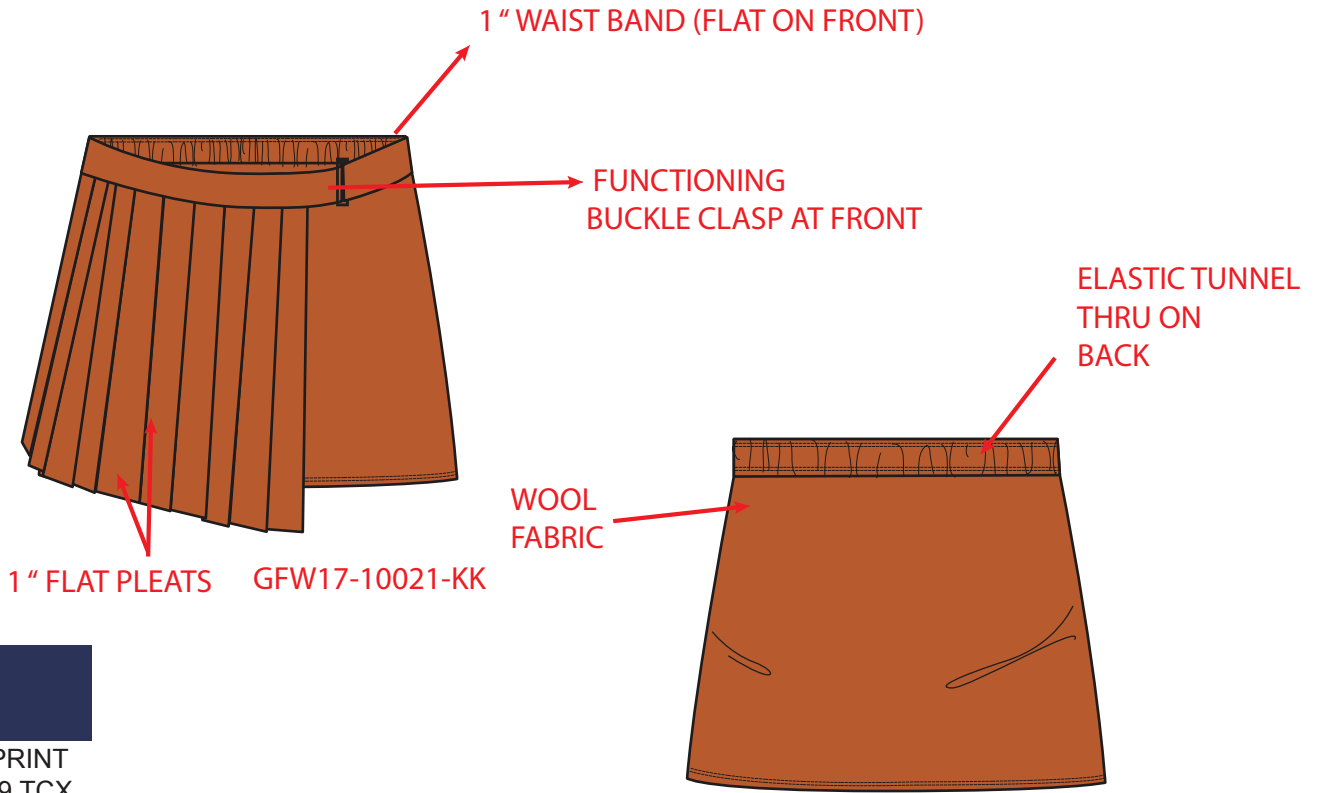


BLUEPRINT  
19-3939 TCX



RUST  
18-1248 TCX





1/2 "WIDE SELF FABRIC BINDING  
W/ DTM SNTS 1/4" EDGE

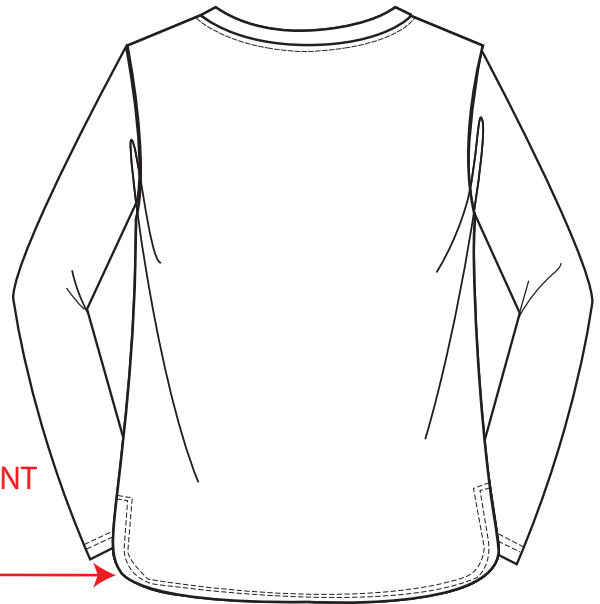


1/8" DNTS  
5/8" FROM EDGE

GFW-10023-KK

HIGH LOW  
HEM-BACK  
SHOULD BE 1 1/2"  
LONGER THAN FRONT

1 1/2" SIDE  
SLITS



1/2" WIDE SELF FABRIC BINDING  
W/ DTM SNTS 1/4" EDGE



1/8" DNTS  
5/8" FROM EDGE

GFW-10023-KK

HIGH LOW  
HEM-BACK  
SHOULD BE 1 1/2"  
LONGER THAN FRONT



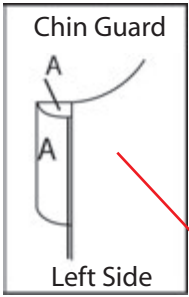
1 1/2" SIDE  
SLITS



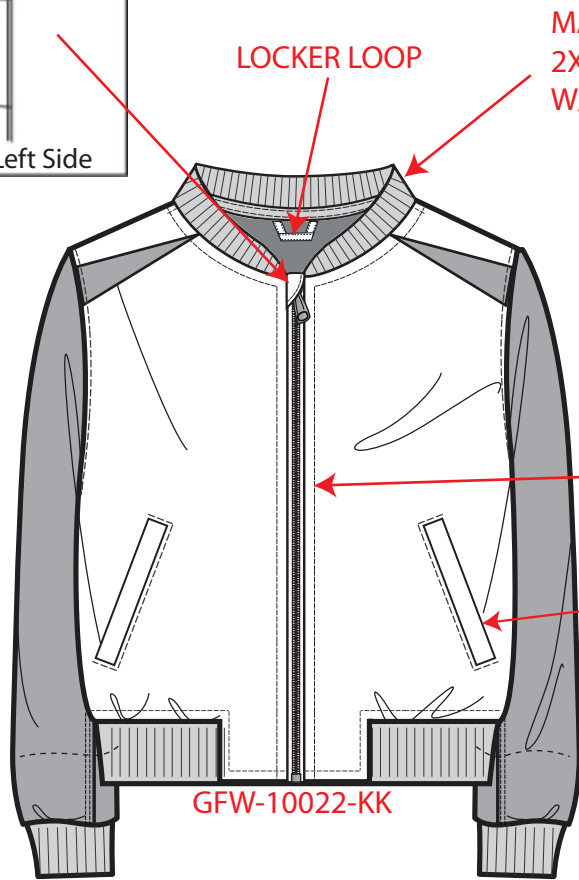
CREAM HEATHER  
(FABRIC)



# GIRLS BOMBER JACKET AND PLAID WOOL SKIRT






**\*THIS STYLE HAS PLEATHER**



**MANDARIN COLLAR  
2X2 FLAT RIB  
W/ 1/4 "SNTS FROM SEAM**

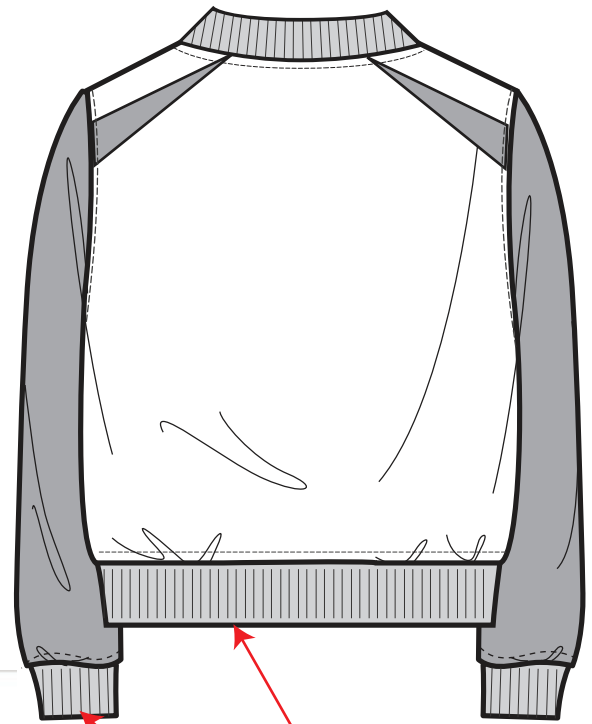
**LOCKER LOOP**

-  BODY-FR. TERRY HEATHER GREY
-  BLACK PLEATHER
-  2X2 FLAT RIB KNIT

**#5 EXPOSED PLASTIC  
ZIPPER, W/ 1/4 "**

**WELT POCKET (FUNCTIONAL)  
1"X4" W/ EDGE STITCH**

**GFW-10022-KK**

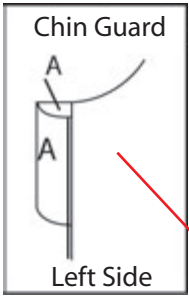


**2X2 FLAT RIB KNIT  
2 "WIDE, PARTIAL FRONT  
WAIST AND FULL BACK  
WAIST AND ALL AROUND  
SLEEVE CUFFS**





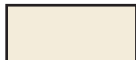


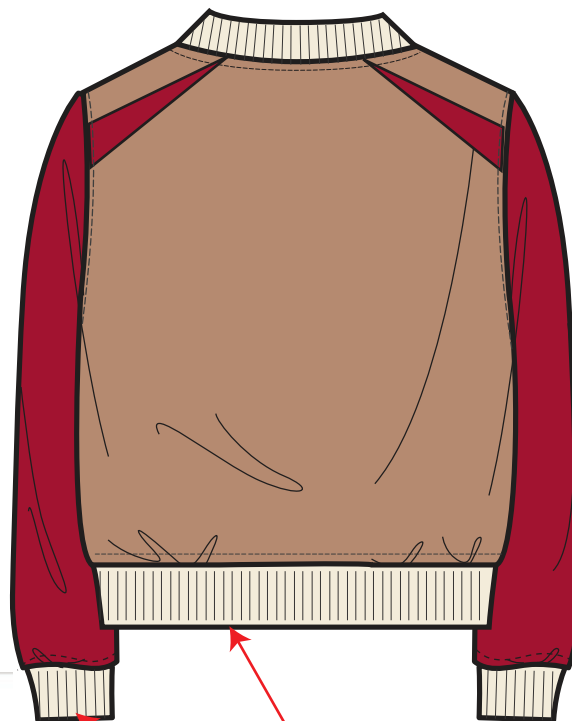
GIRLS BOMBER JACKET AND PLAID WOOL SKIRT

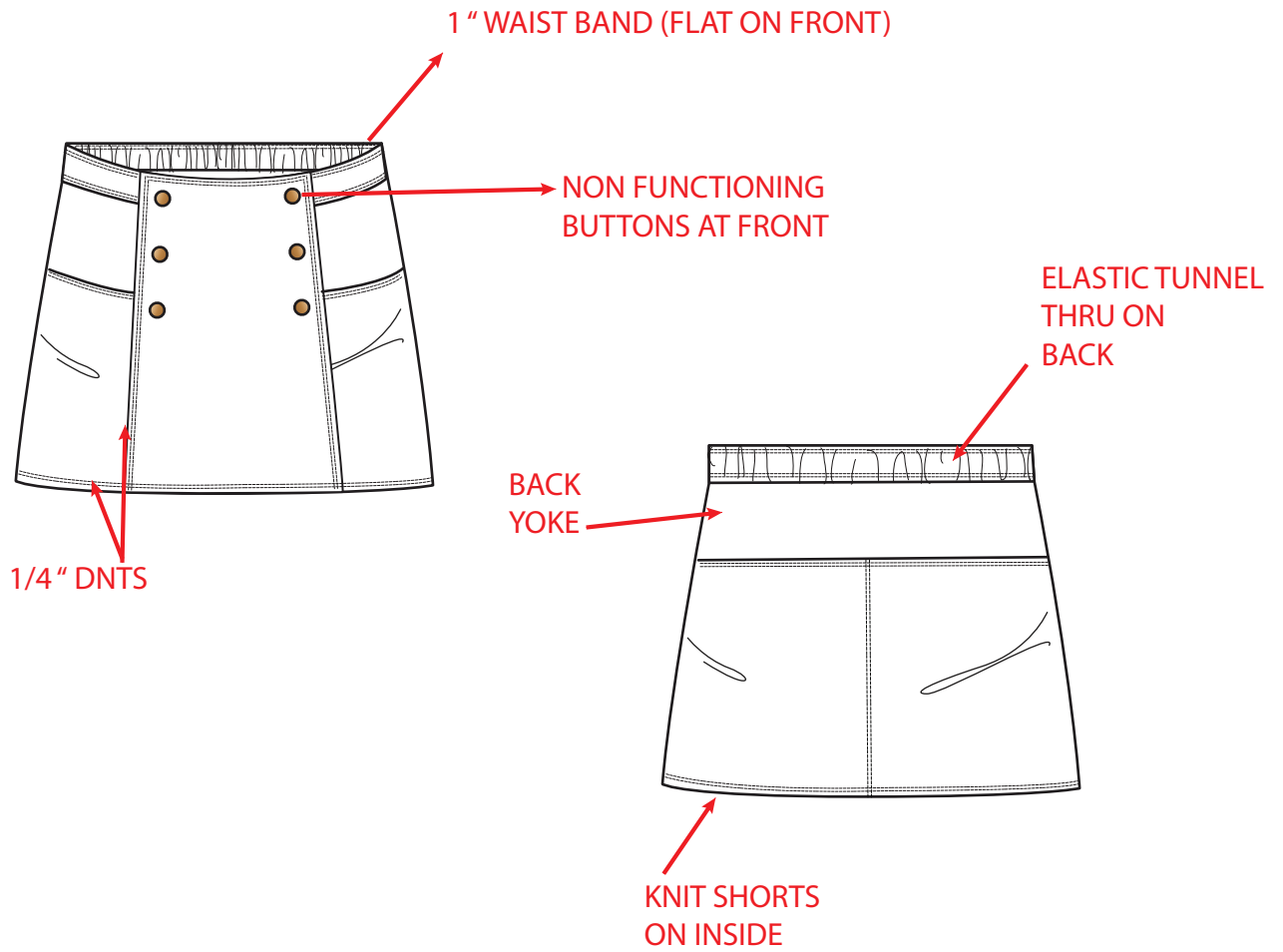


\*THIS STYLE HAS PLEATHER



-  BODY-FR. TERRY MACAROON
-  MAROON PLEATHER
-  2X2 FLAT RIB KNIT

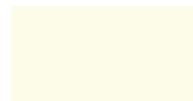




CHILI PEPPER  
19-1557 TCX

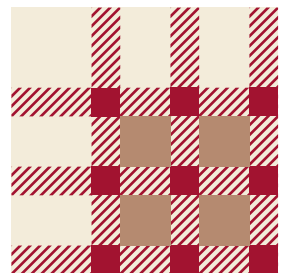


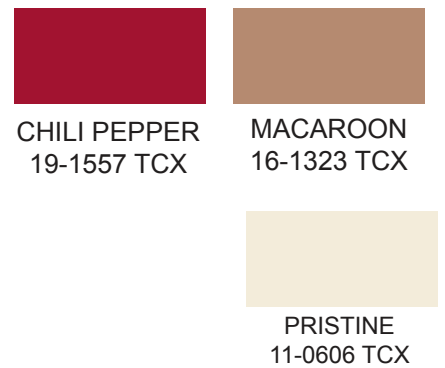
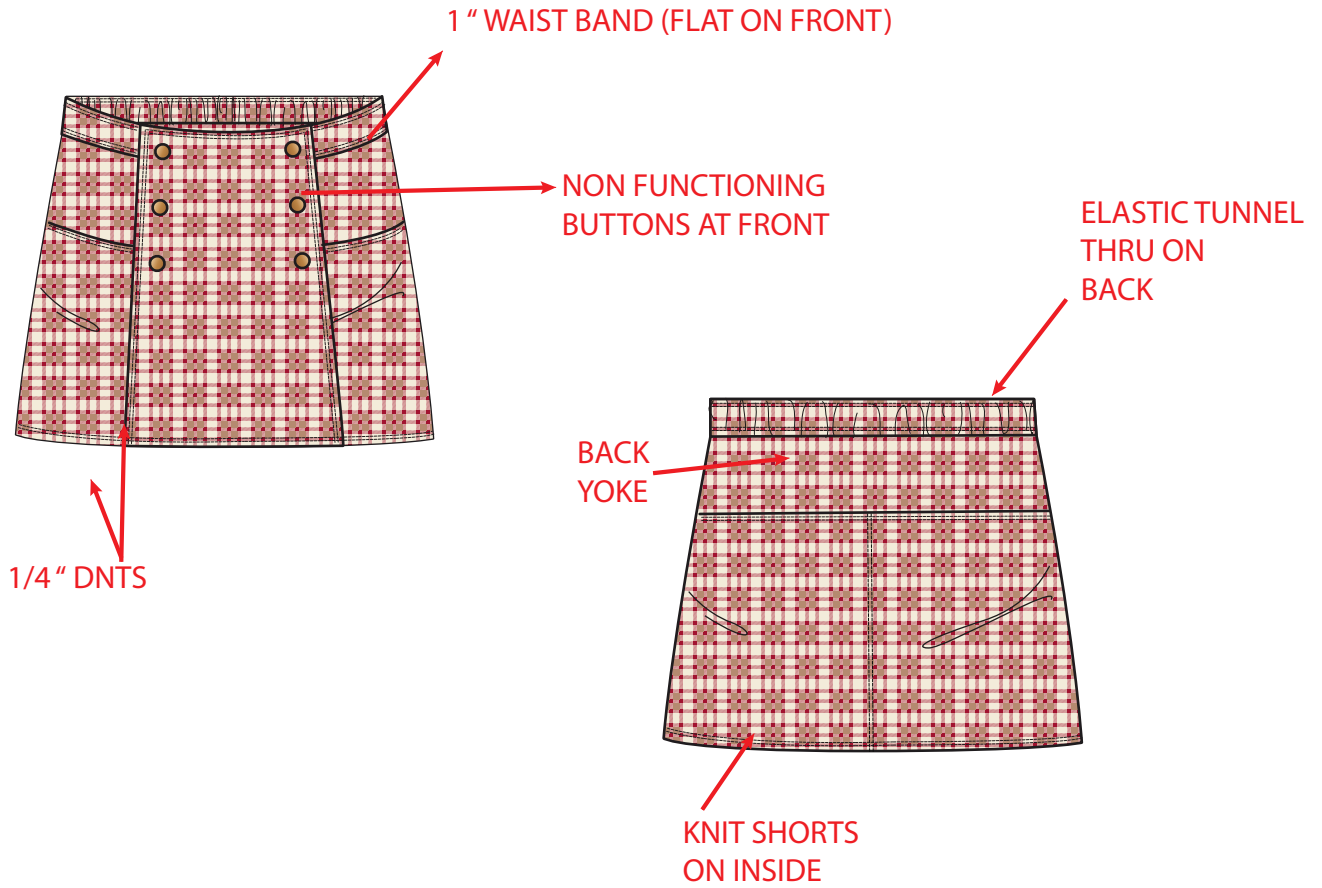
MACAROON  
16-1323 TCX







PRISTINE  
11-0606 TCX

Plaid for Wool skirt





\* THIS VEST IS MADE OF BONDED SHERPA AND SUEDE ALSO HAS FUR AND LEATHER

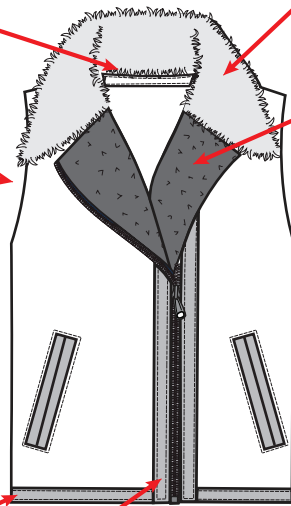
	FUR
	SHERPA SIDE
	SUEDE SIDE
	LEATHER

3/8" SATIN BINDING AT BACK NECK

FUR COLLAR

SHERPA SHOWING ON LABEL

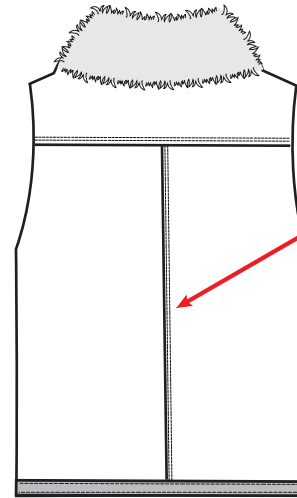
ARMHOLE SELF FABRIC FACED



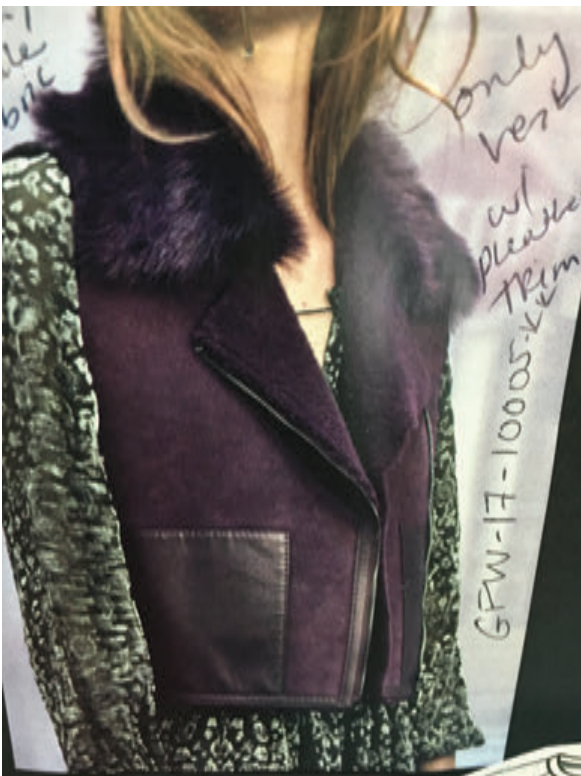
LEATHER WELT POCKETS OPEN ON TOP

GFW17-10005-KK

3/8" LEATHER BINDING AROUND HEM AND BOTH SIDES OF PLACKET EDGE STITCHED ON BOTH SIDES



1/8" DNTS



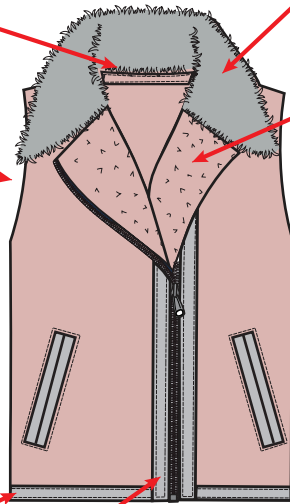
\* THIS VEST IS MADE OF BONDED SHERPA AND SUEDE ALSO HAS FUR AND LEATHER

3/8" SATIN BINDING AT BACK NECK

FUR COLLAR

SHERPA SHOWING ON LABEL

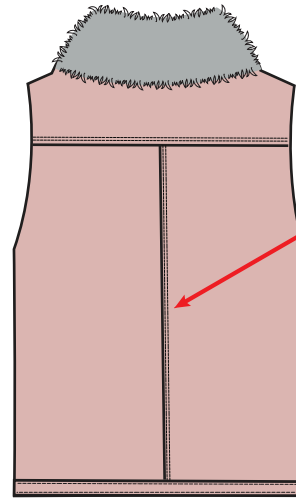
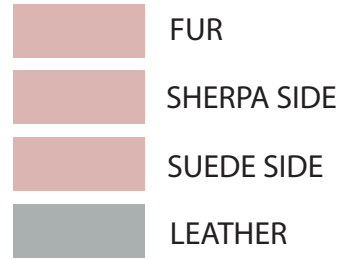
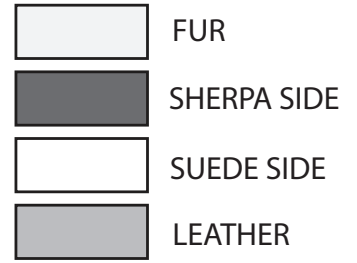
ARMHOLE SELF FABRIC FACED



LEATHER WELT POCKETS OPEN ON TOP

GFW17-10005-KK

3/8" LEATHER BINDING AROUND HEM AND BOTH SIDES OF PLACKET EDGE STITCHED ON BOTH SIDES



1/8" DNTS

