

# *Kate & Luke Toddler Collection*

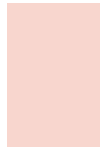
## 2021 Color Palette



Snow white



Red



Apricot Dust



Sugar



Pastel Mint



Kelly fish



Daisy Power Pattern



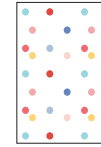
Aqua Petal Flowers



Spring Flower Pattern



Hearts Pattern



Silly dots



Kelly fish dots



Aqua Petal



Mango



Marina



Coral Pink



Air Blue



Astral Aura Blue



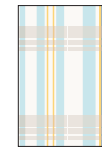
Pink / Snow leopard Repeat



Blue / White Stripes



Skate boards Repeat



Madras Plaid



Kelly fish / Snow white Stripes



Mango / Snow white Stripes



Spaceship Repeat



Astral Aura Blue / White Stripes



White / Astral Aura Blue Stripes



Madras Plaid

*The Kate & Luke SS 2021 Collection has come to represent the resort lifestyle for children of all ages. Our goal is achieve complimentary collection that is classic, modern and stylish. The Kate Collection is a playful collection that embodies the child's spirit threw style.*

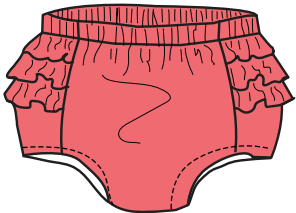
*The mission here is to color the day and seize the comfort. Each pattern is designed to be loved by the girls, which highlights the splendour of each playfull moment, confidence to inspire ones personality and style.*

*We create classic designs, exceptional value, unparalleled private label presentation and a diverse range of high quality accessories. We engage in thoughtful collaborations that result in clear strategy, striking concepts and the right execution in variety styles on apparel, outerwear and accessories.*

TODDLER CASUAL DRESSES



Pinafore dress with square neck wide tank fluttery straps - Heart Pattern  
 100% Cotton cord fabric  
 Lining 80% Polyester 20% Cotton  
 Pockets have applique on front flap



Smocked Dress on  
 100% Voile Cotton  
 Exotic Fruit Cherry embroidery on the chest  
 with buttons on the w/back snap closure  
 with matching bloomers  
 Coral Pink



Floral Muslin dress features double flutter sleeves  
 100% Cotton  
 White with double bows on the side.

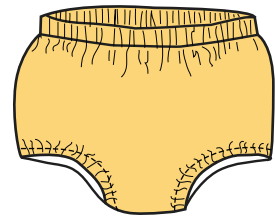


One piece pockets  
 100% Marina Seasucker  
 Full Puff Sleeves with  
 Ruffle opening and  
 inner leg snap closure  
 Be Kind / Rainbow embroidery

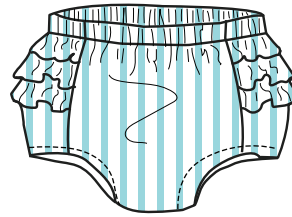


Leopard One piece pockets  
 100% Muslin Cotton  
 With round neck band tank  
 w/shoulder button tab,  
 inner leg snap closure.

TODDLER CASUAL DRESSES



Fine Jersey Dress  
100% fine Jersey Cotton  
Mango/Snow white Stripes - ribbed collar with bow



Seersucker with eyelit trim on dress  
100% Cotton  
Aqua Petal/white with aqua flowers

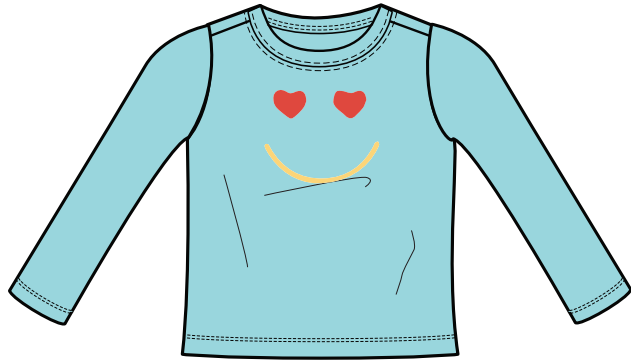


Cardigan in Apricot Dust  
100% Cotton  
Scallop on the plaquett and sleeve with lace trim  
and crochet flowers in neckline



The Giraffe appliqué design dress,  
100% Cotton with embroidery flowers/ Hello text screen printed  
Red

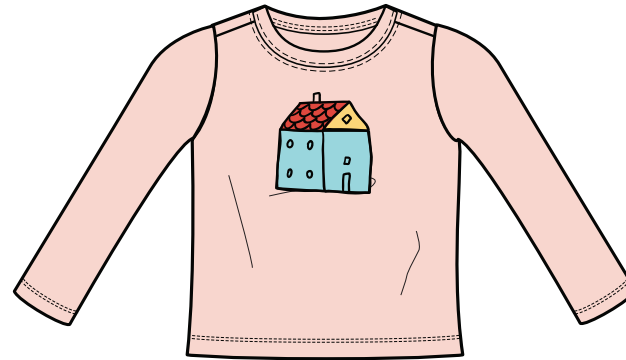
TODDLER MIX AND MATCH



Vintage T - Shirts  
100% Cotton  
Crew Neck LS / peplum drop  
Screen Print



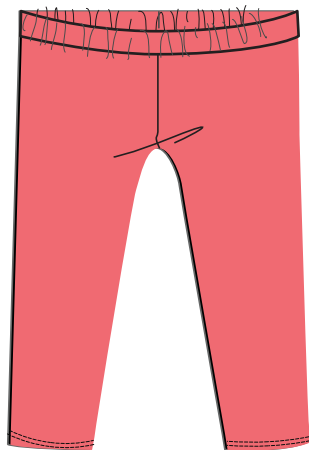
Vintage T - Shirts  
100% Cotton  
Cap Sleeves T- Shirt  
Sun is Sequin colour



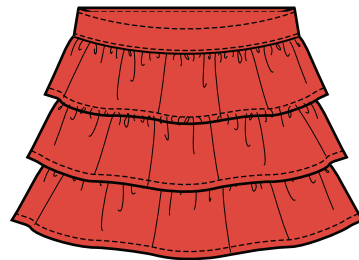
Vintage T - Shirts  
100% Cotton  
Crew Neck LS  
Applique



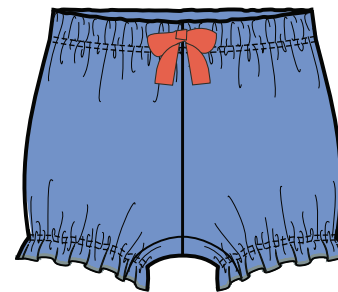
Vintage T - Shirts  
100% Cotton  
Lap Shoulder scallop edge  
Knit sleeve Flutter edge  
Colorful polka dots



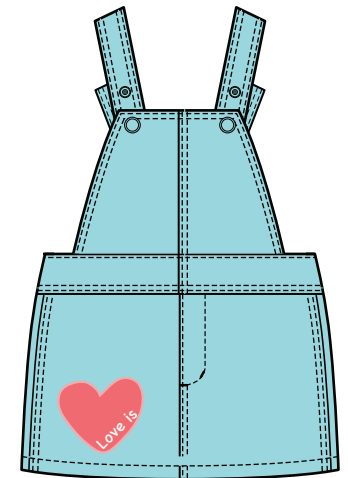
Stretch Jersey Leggings  
92% cotton 8% Elastane  
Coral Pink



3 tier ruffle skirt with elastic waist  
100 % Chambray/Jersey  
Red



Surf Shorts  
100% Jersey knit cotton  
Marina



Overall Skirt  
100% cotton cord  
Applique heart design on skirt

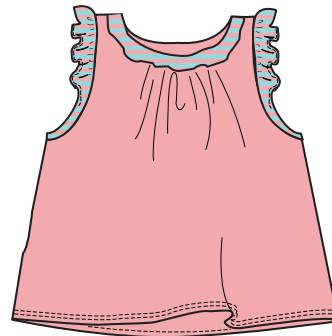
TODDLER MIX AND MATCH



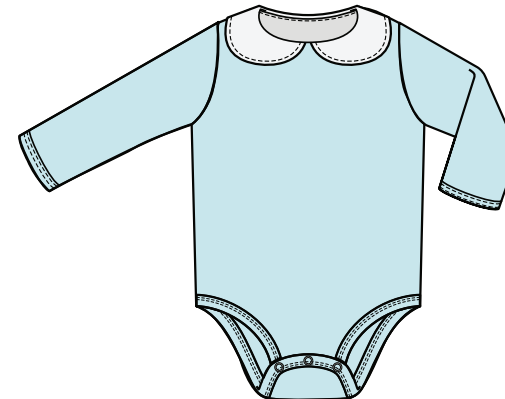
Vintage T - Shirts  
100% Lawn Cotton  
Puff sleeves w/elastic gather  
Beautiful you butterfly /screen print  
on Snow White



Vintage T - Shirts  
100% Lawn Cotton  
Slight puff sleeves  
w/key hole opening  
Fabric Repeat



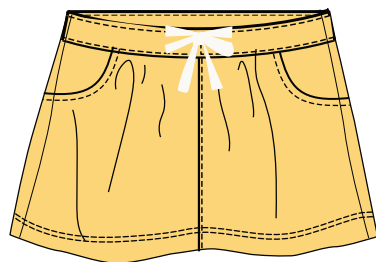
Vintage T - Shirts  
100% Cotton  
with ruffle sleeves  
Sugar and Pastel Mint



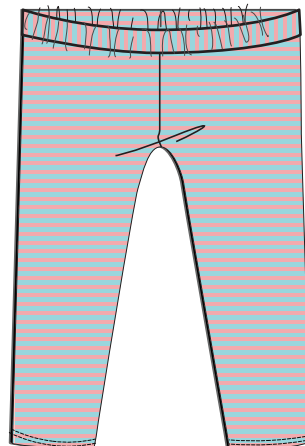
One piece Ribbed bottom snap closure  
and peter pan collar  
100% cotton  
Pastel Mint



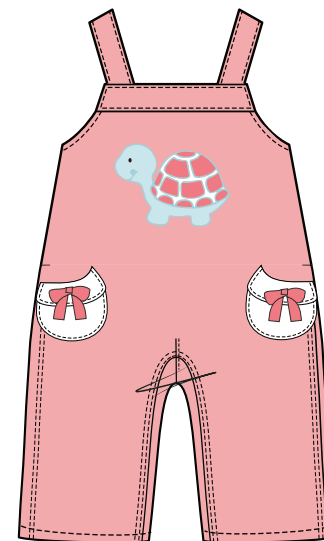
Seersucker Pants  
100% Cotton  
in Kelly fish dots



Skirt with elastic waist  
Chambray/Jersey with  
bloomers underneath  
Mango



Stretch Jersey Leggings  
92% cotton 8% Elastane  
Sugar and Pastel Mint



Vintage T - Overalls  
100% Cotton Cord  
Turtle Applique Sugar/Pastel Mint

BOYS MIX AND MATCH



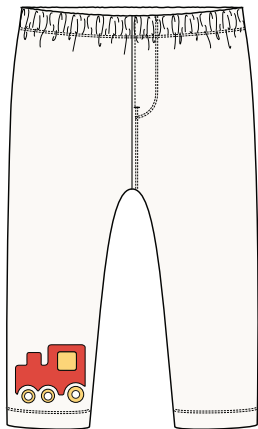
Contrast Loop French Terry  
Snow White/ Mango



Vintage T - Shirts  
100% Cotton  
Mango  
Screen Print



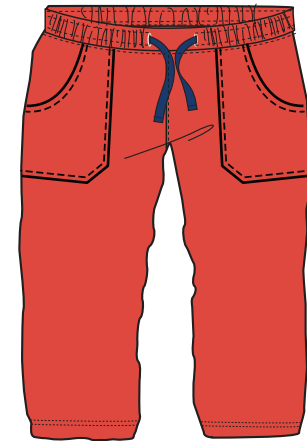
Vintage T - Shirts  
100% Cotton  
Navy/ Surf grey with banded sleeve & collar  
Screen Print



Fleece Pants  
with Cargo pockets  
Snow White with train Applique

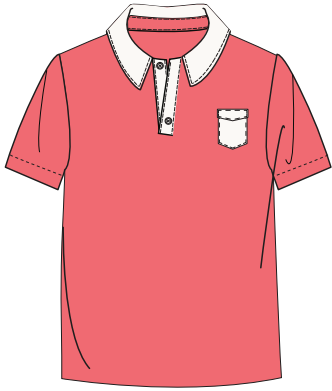


Jersey denim Jeans  
85% cotton 13% polyester 2% elastane  
Machine washable



Jersey Lined Cord Pants drawstring  
Main 100% cotton /Lining 100% cotton  
Coral

BOYS FORMAL DRESS AND SEMI CASUAL



Pique  
100% Cotton  
Coral Pink



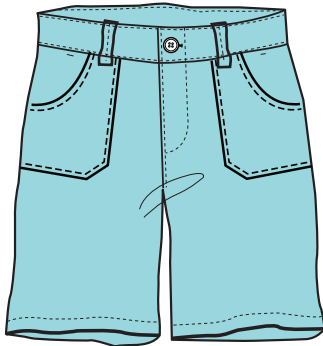
Poplin  
Oliver - Spaceship repeat



Poplin  
Oliver - Plaid Sugar Coral Pink  
Snow white repeat



Pique Polo  
100% Cotton/banded sleeve  
Air Blue with Marina stripe



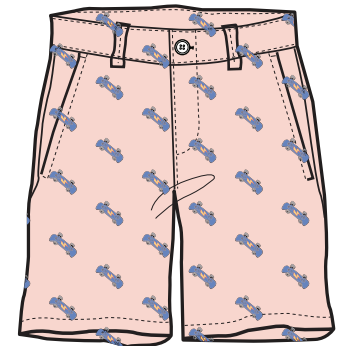
Seersucker Shorts  
100% cotton  
Aqua Petal



Cardigan  
100% Cotton  
Marina Blue



Tank Top  
100% Cotton  
Snow White with Marina Pipping



Chambray Dark Rinse  
100% Cotton  
Apricot Dust  
Skate board Pattern

BOYS MIX AND MATCH



Vintage Jersey  
Air Blue  
Love ya - applique



One piece polo collar  
100% Cotton  
Madras Plaid print



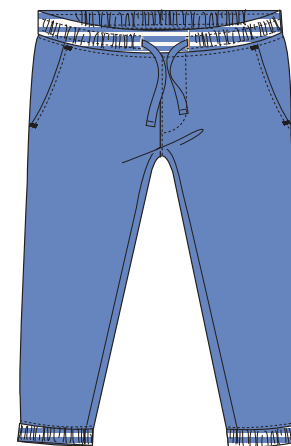
Vintage T - Shirts  
100% Cotton  
Skylight Blue  
Applique Spaceship



Onezie Full Sleeves  
100% Cotton  
Kelly Fish stripes



Vintage Style Full piece with hoodie  
100% Cotton Jersey  
Navy/Snow White stripe



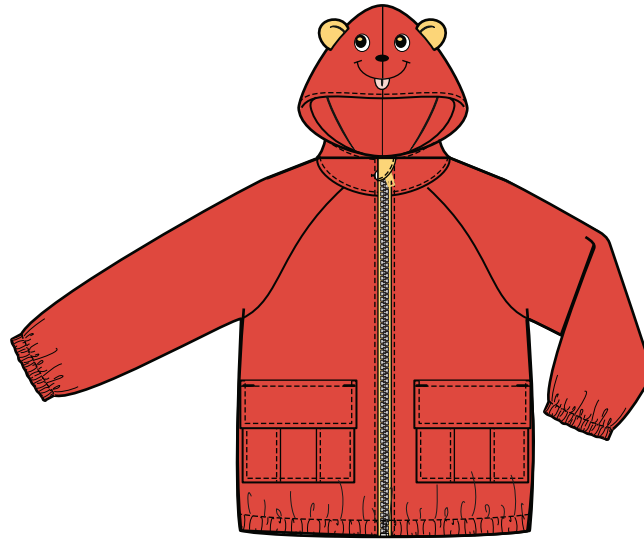
Fleece Pants  
100% Cotton  
Marina



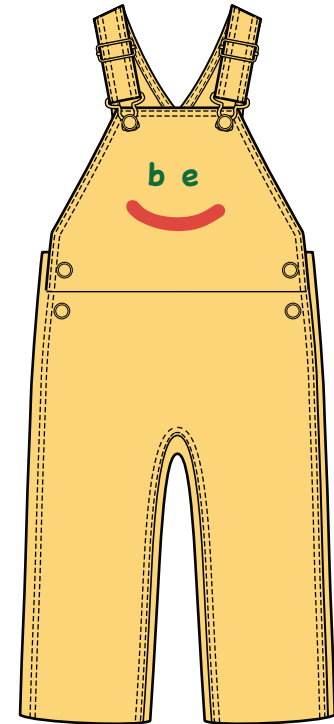
BOYS OUTWEAR



Shaggy lined Hoddie  
 Main 80% cotton 20% polyester  
 Lining 100% polyester  
 Sleeve lining 100% cotton  
 Rib 97% cotton 3% elastane  
 Machine washable



Rain Coat  
 Red  
 Fully lined  
 Outer 100% polyurethane  
 Reverse 100% polyester  
 Body and hood lining 100% cotton  
 Cuff rib 56% cotton 42% polyester 2% elastane  
 Machine washable



Overalls Cordury  
 Mango  
 Main 100% cotton  
 Lining 100% cotton  
 Machine washable